



Explore

Grant County

Published by the Blue Mountain Eagle
John Day, Oregon

2023 Grant County Visitors' Guide

MyEagleNews.com



BEHIND EVERY PROJECT IS A
True Value®

- **OIL HEATING**
- **HARDWARE**



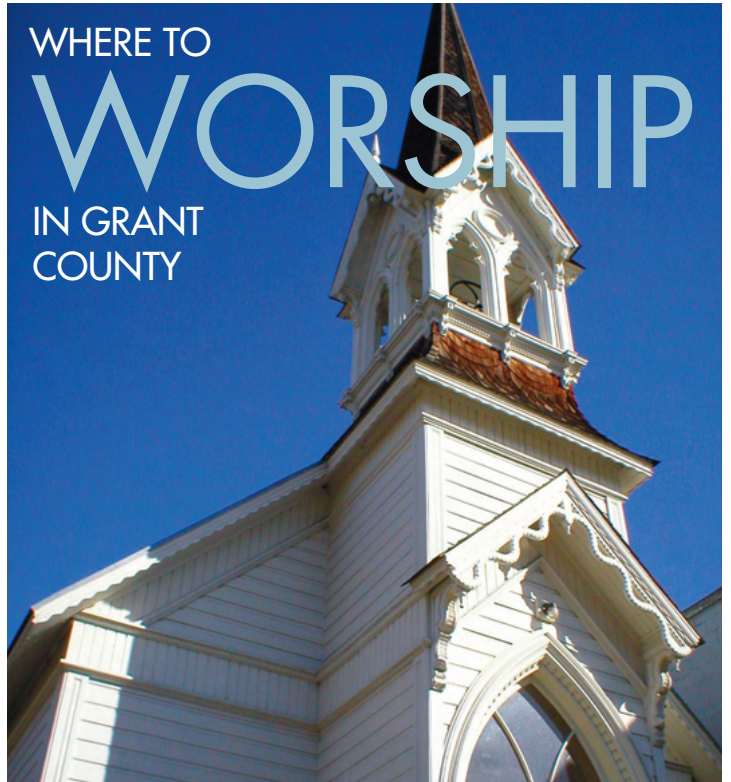
JOHN DAY HARDWARE

**Find Us On Main Street
In John Day**

**541-575-0632
161 E Main St.
John Day**


CCB#205644

WHERE TO WORSHIP IN GRANT COUNTY



Prairie Baptist Church

Sunday School 9 am
 Sunday Morning
 Worship 10:30 am
 Awana (Oct.-Apr.) 3 pm
 Youth Group Thurs 6:30 pm
 541-820-3696
www.prairiebap.org



Equine Therapy

25855 Pine
Creek Rd
John Day
208-859-9907

St. Thomas Episcopal Church

Sunday Morning
 Worship 10am
 Check for location
 on Facebook:
 St. Thomas
 Episcopal Church
 Canyon City, OR
 541-620-1436
 541-270-5903



FIRST CHRISTIAN CHURCH

Sunday School 9:45 am
 Sunday Worship 11 am

**Full Gospel-
Come Grow With Us**

541-575-1202 Church
 311 NE Dayton St, John Day
 Pastor Al Altnow
fccjohnday@centurytel.net

CHURCH OF THE NAZARENE

Sunday School for all ages 9:45am

Sunday Morning Service 10:45am

**Weekly Small Groups
& Bible Studies**

Sonshine Christian School - Ages 3 & 4

Pastor Randy Johnson

Call for more information

521 E Main, John Day

541-575-1895

www.johndaynazarene.com

VICTORY BAPTIST CHURCH

Independent • Fundamental • Premillennial

Sunday School 9:45 am

Sunday Preaching 11 am

Junior Church 11 am

Sunday Evenings 3:30 pm

Wednesday

Bible Study & Master Club 7 pm

Sunday Men's Prayer Meeting 7 pm

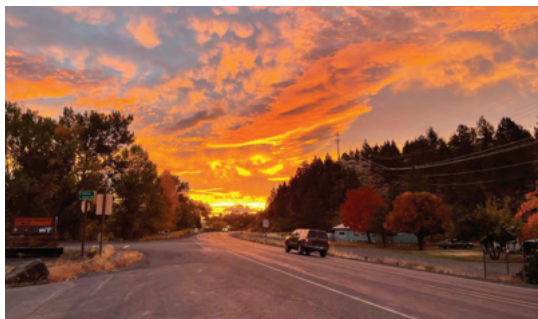
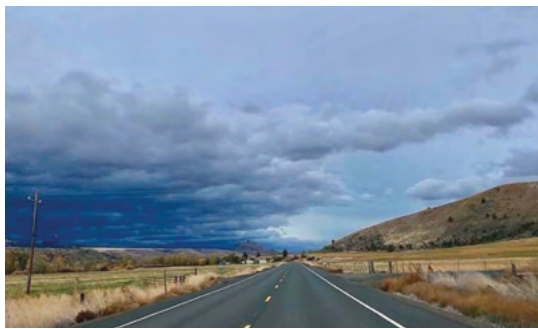
108 S. Washington Street

Canyon City

541-575-2688/541-575-0844



...take the road less traveled...



For much of the outside world, Grant County may seem like uncharted territory, a little-known part of Oregon.

Although vast—it sprawls over 4,500 square miles, nearly as large as Connecticut—the county is remote from more urban parts of Oregon. It's not just rural, but proudly frontier. No freeway or railroad runs through it. You can't drive in from north, south, east or west without first crossing a 5,000-foot pass. If you don't mind sharing a country road with a cattle drive, or pausing for a herd of elk, or stopping on the highway for a county fair parade, you will find it well worth the effort.

The 7,200 folks who call Grant County home have deep roots in their commu-

nities and families, some tracing back to the 1862 Gold Rush. Our biggest city is small by urban standards, and it boasts just one stoplight, the only one in the whole county.

It's a place where people greet each other, even strangers, on the sidewalk. A place where neighbors look out for their neighbors. A place where generation after generation has worked in harmony with the land. Above all, it's a place defined by the bounty of nature—meandering rivers, open range, towering forests, stunning rock formations and abundant wildlife. And while your new friends in Grant County may not tell you where their favorite huckleberry patch is, they'll gladly share the rest of their stories.



to our Frontier Communities:

Canyon City • Dayville • Granite • John Day
Long Creek • Prairie City • Monument
Mt Vernon • Seneca

GRANT COUNTY CHAMBER OF COMMERCE

301 W MAIN, JOHN DAY, OR • 541-575-0547 • WWW.GCOREGONLIVE.COM



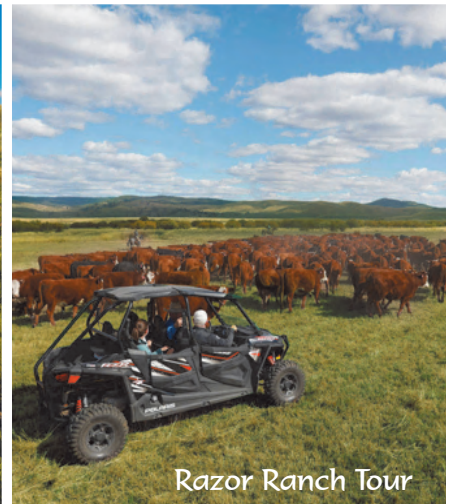
Shopping • Biking • Wildlife • Goats • Western • Golf • Fishing • Horses



Shopping at Goldie's Gallery



Award Winning Golf



Razor Ranch Tour

Cattle • Hiking • Fun • Spa • Relaxation • Dining • Stars • Shooting • RV/Coach Park



In the Heart of it All!



Bourbon Tasting



Rocking Heart Spa



Ranch Raised Cuisine

Day guests welcome!

No sales tax, no resort fee, no tipping, Free wifi & parking

SILVIES, OR | 800-SILVIES | WWW.SILVIES.US





Blue Mountain EAGLE

Editor
Bennett Hall

Editorial Staff
Justin Davis
Neil Nisperos

Advertising Consultant
Kim Kell

Office Coordinator
Alixandra Hand

Staff Designers
Randy Wrighthouse
Cheryl Christian

Explore Designer
John D. Bruijn

Website
MyEagleNews.com

Office Address
195 N. Canyon Blvd.,
John Day, OR 97845

Phone
541-575-0710

VISIT US ONLINE
MyEagleNews.com

FOLLOW US
facebook.com/MyEagleNews
twitter.com/MyEagleNews
Instagram/@myeaglenews



EMAIL US
office@bmeagle.com

WRITE TO US
195 N. Canyon Blvd.,
John Day, OR 97845

ON THE COVER: Logan Valley
PHOTO BY ROBERT G. BROWN

Uncredited photos from
Blue Mountain Eagle archives




Explore Grant County
is published annually by the
Blue Mountain Eagle

Copyright © 2023
Explore Grant County

All rights reserved

EO Media Group

Explore Grant County

MyEagleNews.com   

Spin Your Wheels

- 22 Bicycling
- 24 Motorcycle Riding
- 26 Off-Roading
- 31 Journey Through Time

Things to Do

- 10 10 Places to Play
- 13 Camping
- 18 Take a Hike
- 20 Get on the Water
- 34 Calendar of Events
- 37 Go to the Snow
- 38 Drop a Line
- 40 Gaze at the Stars
- 42 Hit the Links
- 44 Museums
- 49 Hunting


Communities

- 53 Facts & Contacts
- 54 John Day
- 54 Dayville
- 55 Canyon City
- 55 Mt. Vernon
- 58 Prairie City
- 61 Seneca
- 61 Long Creek
- 63 Kimberly
- 63 Monument
- 65 Dale
- 65 Granite

PHOTO BY ROBERT G. BROWN

Welcome to Grant County

Look around and you'll see,
we're in the middle of everywhere!



Just hop on Highway 395 or 26. Whether you are coming from the east, west, north or south, you will find breathtaking scenery and friendly communities. Our visitors appreciate our rural highways, where there is beauty around every turn!

If you are driving a motorhome or towing a travel trailer, Grant County is a great place to stop and spend the night. If you're traveling by car, motorcycle or bicycle, you'll want to stop too! We have nice motels, beautiful RV parks, campgrounds and state parks! Spend some time with us before you hit the road again and head for your next destination.

We have wonderful restaurants, a brewpub and charging stations for your electric vehicle! We have some unique specialty shops and our small businesses are open and waiting for you.

Our frontier communities are very welcoming. And, if you're into wildlife, you're in luck! Just be careful as you drive through, because our town deer are out and about. We have abundant recreational opportunities for every season, and you'll find adventure no matter which direction you go!

Our museums are top-notch. We have things here you won't find anywhere else!

Your cell service might be a little sketchy while you're here. If it is, stop by the Chamber office and connect to our Wi-Fi to check your email or grab a trail map or visitor guide.

We hope you'll stop and stay awhile! Take in some of our fun events. While you're here, be sure to enjoy the rich history of Grant County.

Enjoy our slower pace and relax! If you want quiet and relaxation, we have a sense of solitude that touches our visitors and keeps them coming back.

Tammy Bremner
Grant County Chamber
of Commerce manager

Explore

MyEagleNews.com



Advertisers Directory

ACTIVITIES

- 41 Anthony Lakes
- 29 Bare Bones Bowling Alley
- 47 Eagle Cap Excursion Train
- 47 Grant County Snowballers
- 46 JD Rents
- 41 Prairie City Fiber Fest

AG SUPPLIES & SERVICES

- 41 Gibco Ag. & Industrial
- 50 Grant County Weed Control

AUTO SERVICES & TRANSPORTATION

- 60 1st Choice Auto Body & Repair
- 60 Frontier Equipment & Repair
- 41 Grant County People Mover
- 60 John Day Auto Parts/NAPA
- 61 Les Schwab Tires
- 46 OK Garage

CLOTHING & GIFTS

- 47 A Flower Shop 'N More
- 57 Bar WB
- 46 Dark Horse Rentals
- 47 etc. A Unique Boutique
- 62 Len's Pharmacy

CHURCHES

- 2 Church of the Nazarene
- 2 First Christian Church
- 2 God & Horses
- 2 St. Thomas Episcopal Church
- 2 Prairie Baptist Church
- 2 Victory Baptist Church

COFFEE

- 29 Bare Bones Coffee
- 46 Log Cabin Espresso
- 48 Timbers Bistro

CONTRACTORS

- 51 Mobile Glass of Oregon
- 33 Oregon Trail Well Services
- 51 Patriot Plumbing
- 51 Wilson's Welding & Fabrication

EDUCATION

- 27 EOU

ELECTRONICS

- 25 DP Home Entertainment

ELECTRICITY

- 52 OTEC

FAIRGROUNDS

- 9 Grant County Fairgrounds

FUEL

- 46 Austin House Cafe & Country Store
- 46 Boyer's Cash Store
- 47 Burnt River Market
- 41 Dale Store
- 16 Ed's Fast Break/Sinclair & Canyon City Shell
- 46 John Day River Trading Post
- 46 OK Garage
- 48 Triangle Mini Mart

GOLF COURSES

- 28 Anthony Lakes Quail Ridge Golf
- 25 John Day Golf Course
- 4 Silvies Valley Ranch, Retreat & Links

GROCERIES

- 46 Boyer's Cash Store
- 47 Burnt River Market
- 12 Chester's Market
- 62 Huffman's Select Market
- 46 John Day River Trading Post
- 43 Russell's Custom Meats

HARDWARE & BUILDING SUPPLIES

- 51 Grant County Building Supply
- 2 John Day True Value
- 51 Mills Building Supply & Sporting Goods
- 28 Nydam's Ace Hardware
- 43 The Floor Store

INFORMATION CENTERS

- 3 Grant County Chamber of Commerce
- 67 Grant County Economic Development
- 30 Harney County Chamber of Commerce

INSURANCE

- 47 Sharon Lang Insurance
- 46 State Farm Insurance

HEATING

- 51 Apex

LODGING & RV PARKS

- 25 Bates State Park
- 57 Budget 8 Motel
- 25 Clyde Holliday State Park
- 25 Depot RV Park
- 56 Dixie Creek Bungalows
- 56 Fish House Inn & RV
- 62 Grant County Fairgrounds RV Park
- 59 Hotel Prairie
- 57 John Day Motel
- 56 Lake Creek Camp
- 56 Lands Inn & Camping
- 57 Long Creek Lodge Motel
- 28 OHV Park Morrow County/Grant County
- 56 Seneca Timbers Inn & RV Park
- 56 Victorian Lane B&B

MEDICAL

- 18 Blue Mountain Chiropractic Health Clinic
- 68 Blue Mountain Hospital District
- 25 Haven House
- 62 Len's Pharmacy

MISCELLANEOUS

- 66 Rocky Mtn Dispensary
- 29 Target Practice

MUSEUMS

- 9 Kam Wah Chung & Visitor Center

NEWSPAPERS

- 60 Blue Mountain Eagle

NURSERIES & PRODUCE

- 47 A Flower Shop 'N More
- 25 Better Blooms & Gardens
- 43 John Day Farmers Market
- 62 Thomas Orchards

PHOTOGRAPHY

- 60 Robert G. Brown Landscape Photographer
- 18 TBMmedia
- 64 Simply Nature Photography by Kyle Cline
- 47 Yellow Sage Photography

REAL ESTATE

- 43 Country Preferred Realtors
- 17 Duke Warner Realty
- 19 Eastern Oregon Realty, Inc.
- 32 Madden Realty
- 62 Mossy Oak Properties/Copper Creek Realty

RECREATIONAL VEHICLES

- 36 John Day Polaris

RESORTS

- 41 Anthony Lakes Resort
- 4 Silvies Valley Ranch Retreat & Links

RESTAURANTS

- 46 Austin House Cafe & Country Store
- 57 Chuck's Little Diner
- 47 Dayville Cafe
- 9 Grubsteak Mining Company
- 57 Mt. View Mini Mart
- 57 Prairie Saloon
- 18 Subway
- 29 Sud's Pub
- 9 The Ugly Truth

SURVEYING

- 28 Benchmark Surveying

- Burgers
- Pizza
- Broasted Chicken
- Kid friendly until 8:00 PM



Open 11:00 AM to close
145 E. Main Street • John Day
541-575-1310



Grubsteak Mining Co.

RESTAURANT & LOUNGE

Prime Rib • Steaks • Hamburgers

Family Owned
Since 1980

Open 7 Days a Week
11 AM-9 PM



Take-Out • Lunch • Dinner

The oldest established restaurant in Grant County
149 E. Main St., John Day • 541-575-1970



Kam Wah Chung

museum & interpretive center



Check out our
website for a
360° video tour

125 NW Canton
John Day, OR
541-575-2800

FriendsOfKamWahChung.com

Grant County OREGON EST 1909 FAIR & RODEO

CONCERT AUGUST 11

6:00pm Gates Open

7:00pm Opening Act (TBD)

8:30pm Josh Turner

No outside food or drinks. No bags or purses.

For nearly two decades, Josh Turner has been one of country music's most recognizable voices, selling more than 8.5 million units and amassing more than 2.5 billion global streams. He has never kept his reverence for traditional country music a secret, but, with this latest album, Josh Turner is definitely in a Country State of Mind.



TICKETS ON SALE

February 3 online at
grantcountyorregon.net

PRESENTS
JOSH TURNER





THINGS TO DO

10 Places to Play in Grant County

1. Seventh Street Sports Complex

A few blocks off Main Street in John Day, the 23-acre multi-use complex has something for everyone, including a mile-long paved trail wrapping around a tree-lined grassy field, baseball and softball fields, tennis and basketball courts, a stocked fishing pond, two playgrounds, nine-hole disc golf course, skatepark and a splash pad for kids, along with sheltered picnic areas with restrooms and a shower facility.

2. Magone Lake

One of Grant County's favorite places to cool off on scorching summer days. Fifteen miles northwest of Prairie City off County Road 18, Magone Lake (pronounced "muh-GOON") offers a day-use area as well as a campground set among white fir and ponderosa pine, with a picnic shelter and group campsite that can accommodate up to 75 each. The lake is perfect for fishing, swimming or paddling, and a 1.5-mile trail hugs the shoreline.

3. Covered Wagon Overlook

A few miles east of Prairie City on Highway 26, the overlook commemorates the journey taken by the pioneers on the Oregon Trail and provides a breathtaking view of the Strawberry Mountains.

4. Blue Basin

Located on Highway 19 near Kimberly in the Sheep Rock Unit of the John Day Fossil Beds National Monument, Blue Basin offers scenic hiking through spectacular geological formations.

5. Mascall Overlook

Spectacular views of the John Day Valley and Picture Gorge highlight this interpretive overlook, just off Highway 26 west of Dayville.

6. Sumpter Valley Interpretive Trail

Located off Highway 26 northeast of Prairie City, this is a good spot for travelers to pull over, stretch their legs and read about how the Sumpter Valley Railway was once the primary mode of transportation in the region.

7. Logan Valley

A few miles east of Seneca on Forest Road 16, this scenic area offers lots of opportunities for photography, birdwatching, wildlife viewing and camping.

8. Bare Bones Bowling Alley

The former Nugget Lanes at 679 W. Main St. in John Day has reopened under new management. Open Friday-Sunday from noon till 8 (the adjoining bar stays open later), Bare Bones features six lanes of bowling plus pool, foosball, shufflepuck, video games and a snack bar.

9. Olive Lake

Popular for boating, fishing, hiking and camping, 160-acre Olive Lake sits at about 6,000 feet in the Blue Mountains, roughly 12 miles west of the historic mining town of Granite. With 28 campsites, picnic tables, a boat ramp and two docks, this remote high country lake has a host of attractions for visitors.

10. Swick Old Growth Interpretive Site

Perfect for a leisurely stroll or a relaxing picnic, this charming spot 17.5 miles south of John Day on Highway 395 features a ¾-mile paved interpretive trail that winds through a towering grove of old growth ponderosa pines.



3.

PHOTO BY
JUSTIN MORDENO



4.

7. PHOTO BY
BRANDON MCMULLEN



10.



2. PHOTO BY
CHARLES MCKENNA



6.

Chester's MARKETS

Positively Impacting the Communities We Serve



- Full Service Deli
- Fresh Local Produce
- Fresh Meat
- Ready-to-eat Meals
- Sub Sandwiches
- Fresh Baked Goods
- Made-to-order Catering Trays and Cakes

Liquor Store

Chester's
MARKETS Rewards

Variety Department



631 West Main John Day, OR 97845

myChesters.com

541-575-1899

THINGS TO DO

Camping in Grant County

Give your worn, dirt-covered boots a break, take a breath of fresh, mountain air and connect with the natural environment in one of the many campgrounds around Grant County. With thousands of acres of public land, Grant County has plenty of places to choose from, with amenities ranging from hookups for RVs to dry camping. No matter which direction you set out in, you will find a campground suitable for you.

On the Malheur National Forest about 20 miles from John Day, Fall Mountain Lookout allows visitors to spend the night in a former fire lookout atop an 18-foot tower. A catwalk encircles the structure, providing 360-degree views of the surrounding areas, including the Strawberry Mountain Wilderness, Seneca and Mt. Vernon. The lookout can only accommodate two people and provides few amenities.

The Sunshine, Short Creek, Deer Creek and Murderers Creek guard stations — former firefighters outposts — can be rented.

Although most of the national forest campgrounds are first-come, first-served, the tower and guard stations can be reserved online. For reservations or more information, visit [recreation.gov](https://www.recreation.gov).

Clyde Holliday State Park

Sitting next to the John Day River only an hour away from some of Oregon's most pristine wilderness areas, Clyde Holliday State Park offers camping beneath towering cottonwood trees. Visitors to the 43-acre park may spot elk and mule deer grazing nearby or steelhead rushing upriver to spawn.

Campground facilities include 31 first-come, first-served electrical sites with water and two reservable teepees for rent from mid-April through late September, a hiker/biker camp, hot showers and flush toilets, firewood and ice for sale, an RV dump station, horseshoe pits and an outdoor amphitheater with summer interpretive programs.

Clyde Holliday State Park is located on Highway 26 a mile east of Mt. Vernon and 8 miles west of John Day.

Bates State Park

Once the site of a thriving lumber mill and company town that operated from 1917 to 1975, the 131-acre Bates State Park lies along the Middle Fork John Day River and Bridge and Clear creeks. The park features 4 miles of hiking trails and an old mill pond where visitors often spot beavers and otters.

Campground facilities include 28 primitive sites for rent for tent camping or self-contained RVs, vault toilets, potable water, and a hiker/biker camp with six sites and electric plug-ins. Three campsites are accessible to campers with disabilities. Camping is first-come, first-served from May 1 to Oct. 1. A day-use area contains facilities for picnicking.

Bates State Park is located about 17 miles east of Prairie City on County Road 20 about a mile from the junction of Highway 26 and Highway 7.

For more information, visit [oregonstateparks.org](https://www.oregonstateparks.org).

See Grant County campgrounds map on pages 14 & 15

Explore



Camping



Picnicking



Fishing



Boating



Swimming



Bicycling



Accessible



Snow sports



Hiking



Hunting



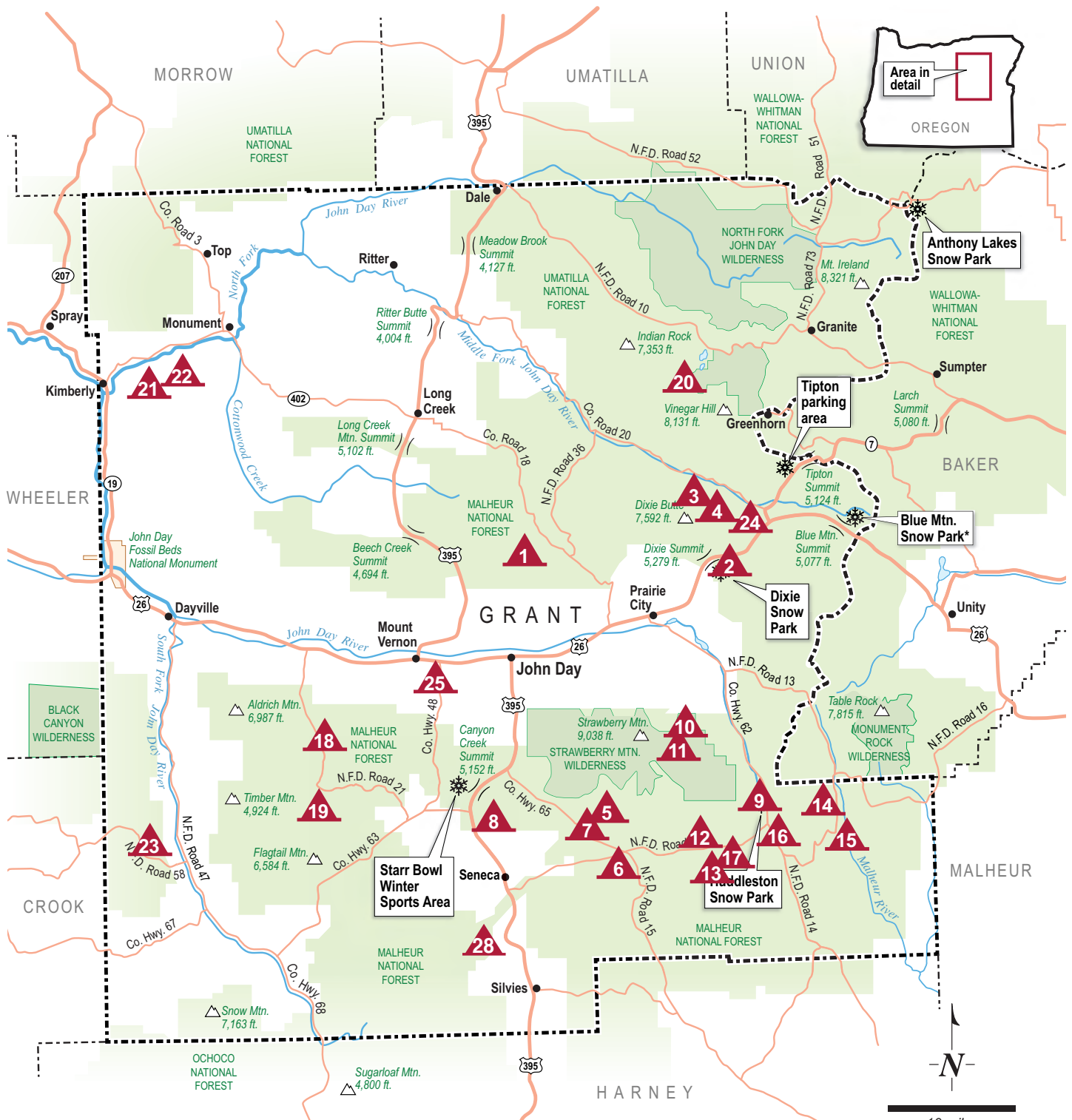
Corral

	Campground/park	Tent sites	Tent/trailer	Water	Fee	Activities
1.	Magone Lake — USFS 26 miles N. of John Day on Forest Road 3620	3	20	Piped	\$13	
2.	Dixie — USFS 8 miles N.E. of Prairie City on U.S. Hwy. 26	—	11	—	\$8	
3.	Middle Fork — USFS 9 miles N.W. of Austin Junction on Co. Road 20	—	10	Stream	\$8	
4.	Deerhorn — USFS 4 miles N.W. of Austin Junction on Co. Road 20	—	5	Stream	\$8	
5.	Little Crane — USFS 30 miles S.E. of Prairie City on Forest Road 16	—	4	Stream	—	
6.	Parish Cabin — USFS 11 miles E. of Seneca on Forest Road 1520	—	18	Piped	\$8	
7.	Wickiup — USFS 18 miles S.E. of John Day on Forest Road 15	—	7	Stream	\$6	
8.	Starr — USFS 16 miles S. of John Day on Hwy. 395	—	11	—	\$6	
9.	Trout Farm — USFS 15 miles S.E. of Prairie City on Co. Road 62	—	6	Piped	\$8	
10a.	Slide Creek (east side of road) — USFS 9 miles S. of Prairie City on Forest Road 6001	—	3	Stream	—	
10b.	Slide Horse Camp (west side of road) — USFS 9 miles S. of Prairie City on Forest Road 6001	—	3	Stream	\$8	
11.	Strawberry — USFS 11 miles S. of Prairie City on Forest Road 6001	10	—	Piped	\$8	
12.	Murray — USFS 21 miles E. of Seneca on Forest Road 924	—	6	Stream	\$8	
13.	Big Creek — USFS 21 miles E. of Seneca on Forest Road 815	—	15	Piped	\$8	
14.	Elk Creek — USFS 25 miles S.E. of Prairie City on Forest Road 16	—	5	Stream	—	
15.	North Fork Malheur — USFS 29 miles S.E. of Prairie City on Forest Road 1675	—	6	Stream	—	
16.	Crescent — USFS 17 miles S.E. of Prairie City on Co. Road 62	—	4	Stream	—	
17.	Lake Creek Youth Camp — Nonprofit 20 miles E. of Seneca on Forest Road 924	Call for availability and prices 541-575-2153	4	Piped	—	
18.	Billy Fields — USFS 20 miles S.W. of John Day on Forest Road 21	—	4	Stream	—	
19.	Oregon Mine — USFS 26 miles S.W. of John Day on Forest Road 2170	5	—	Stream	—	
20.	Olive Lake — USFS 26 miles S.E. of Dale on Forest Road 10	5	23	—	\$12	
21.	Lone Pine — BLM 1.5 miles N.E. of Kimberly on Co. Road 402	—	5	—	\$8	
22.	Big Bend — BLM 3 miles N.E. of Kimberly on Co. Road 402	—	4	—	\$5	
23.	Frazier — USFS 20 miles S.W. of Dayville on Forest Road 5800-500	—	10	Stream	—	
24.	Bates State Park 30 miles N.E. of John Day on Middle Fork Lane	—	28	Piped	\$5-11	
25.	Clyde Holliday State Park 8 miles W. of John Day on U.S. Hwy. 26	—	31	Piped	\$5-24	
26.	Grant County RV Park At the fairgrounds in John Day	—	50	Piped	\$15-30	
27.	Lower Camp Creek — USFS 39 miles N. of John Day on Forest Road 36	—	6	Stream	\$6	
28.	Silvies Rendezvous Coach/RV Park 11 miles S. of Seneca and 3.5 miles W. of Hwy 395 on Forest Road 3930	—	11	Piped	Call for availability and prices 541-573-5150	

Grant County Campgrounds

Legend

-  Campground
-  Highway/state route
-  Rural route
-  County line
-  River
-  Lake
-  Mountain
-  Pass
-  Federal forest
-  Wilderness area



Sources: U.S. Forest Service; Bureau of Land Management; Oregon Parks and Recreation Dept. *Under development



Fuels • Lubes • Propane • Service • Shell Station

AFTER HOURS GAS NOW AVAILABLE!
with credit card only



DUKE WARNER REALTY

Grant County:
A great place to call home.

*Thank you for your Friendship, your Business
and the opportunity to Serve You!*

Between our offices in Central and Eastern Oregon we are
celebrating raising the bar for over 55 years.

Thank you for joining us in supporting local businesses!

We Love & Appreciate Referrals!

Active Listings!



Dale Oregon Business!

Store, Post Office, Fuel, Game Cooler, Auto Shop, Restrooms, RV Parking, River Shuttle Service, Home On 11 Acres.

\$795,000



Premium Equestrian Potential On The South Fork Of The John Day River!

Amazing Views, 205 Acres, 50 Irrigated, Beautiful Home, Corrals, Paddocks, Hay Cover Machine Shop, Office, LOP Tags.

\$1,200,000



Hobby Farm Setting On 1.5 Acres!

Fantastic Views, 2 1/2, Bonus Room, Garage, Shop, Irrigated Pasture. MTV

\$375,000



40 Acre Buildable Parcel On Baldy Mt!

Located Near Strawberry Mt Wilderness Trail Head, Mt & Valley Views. JD

\$120,000

Recent Solds!

1 Acre! Barn, Irrigated, City Services. DV \$86,000
320 Acre Hunting Parcel! Cabin, Views. MTV \$210,000
Home On The John Day River! 4/2, Shop. JD \$355,000
Spray Store! Fuel, Café, Groceries. \$557,500

1 Acre! Custom Cedar Home, 4/2, Garage/Shop. CC \$415,000
13 Acres! Log Home, 2 Story, Shop, Irrigated. CC \$470,000



LORI HICKERSON, Principal Broker, GRI
Office: 541-575-2617 • ljh@ortelco.net

SALLY KNOWLES, Broker, GRI
Office: 541-932-4493 • sknowles@ortelco.net

BABETTE LARSON, Broker, GRI
Office: 541-987-2363 • ddwr@ortelco.net

Licensed in the State of Oregon

www.dukewarnerrealtyofeasternoregon.com

THINGS TO DO

Get on the Water

Grant County's wealth of rivers, streams and other water bodies leave no shortage of aquatic activities to enjoy. Whether it's fishing, floating, swimming or just relaxing on the water, there is something for everyone.

The John Day River, one of the longest undammed rivers in the U.S., flows through Grant County.

The three separate forks, North, Middle and South, offer Class 1 and Class 2 rapids. With no dams to control water flow, the rapids and water levels fluctuate and should be scouted ahead of time. March to June, depending on the water level, is usually the best time to float or paddle the John Day.

For current rules and flow-level forecasts, contact the Bureau of Land Management's Prineville office at 541-416-6700.

Additional information is also available from the Oregon Parks and Recreation Department at 503-986-0707 and the Grant County Chamber of Commerce at 541-575-0547.

Magone Lake, a Grant County gem, offers abundant opportunities for fishing, paddling, and swimming in the lake's shallow edges or areas in the middle where the water can be as deep as 100 feet. The lake features a 1.5-mile trail along the water's edge that is accessible for all fitness levels.

For a more remote getaway, try 160-acre Olive Lake, which sits at about 6,000 feet in the Blue Mountains, roughly 12 miles west of the historic mining town of Granite. With 28 campsites, picnic tables, a boat ramp and two docks, this high country lake has a host of attractions for visitors.



Magone Lake

PHOTO BY CHARLES MCKENNA

Tension? Joint Pain? Chronic Headache?



Chiropractic care can help you get to the root of your symptoms without potentially harmful drugs or surgery.

**CALL NOW FOR YOUR
APPOINTMENT
AND START GETTING RELIEF**

BLUE MOUNTAIN CHIROPRACTIC HEALTH CLINIC
541-575-1063 | 155 NW 1st Avenue, John Day

SUBWAY® of John Day



SUBS, FLATBREADS & SALADS

Order by phone, online or mobile app.
541-575-0782 • order.subway.com



THE BEARDED MOONEY



TBMmedia

TBMmedia.net@gmail.com
541 620-1707



**CALL OUR
OFFICE TODAY FOR
A FREE MARKET
ANALYSIS**



Thank you Grant County for another successful year!

We are now celebrating 44-plus years as Grant County's oldest locally owned Real Estate Company. We are proud to be able to live and raise our families in Grant County. We are your neighbors and work alongside of you every day in an effort to make Grant County a better place to live.

Like you, we pay local and county taxes, support our schools, the hospital, and serve on various boards and committees, and contribute our time and money to many worthwhile causes such as:

Special Olympics - CASA - American Legion - Senior Meals - G.C. Ministerial Association - Grant County Fair - Chamber of Commerce - Timber Truckers Light Parade - Boy Scouts - FFA - Swim Team - Little League - Dance Team - Volleyball - Grad Night - BowHunters - John Day Golf Course - Carrie Young Memorial - Kam Wah Chung Museum - Seneca PTA - Awana - local churches - charities - special events, and the list goes on.

In today's ever changing times of sophisticated financing and continuing change of legal procedures, it is very difficult for the average property or business owners to buy, sell or trade his or her own property, and be assured that no problems will emerge at a later date. Trained professional real estate assistance will insure that all current laws and procedures are followed and that a happy and satisfied seller and buyer relationship exists.

If you are thinking of buying or selling real estate we hope that you will support a local realtor who lives in the area, understands our market and is available on short notice to assist with unscheduled visitors.

WE WORK VERY HARD TO GET YOU TOP DOLLAR FOR YOUR PROPERTY !

We appreciate your business!

Your friends at Eastern Oregon Realty

Jerry, Traci, & Pete



Member of State & National Assoc. of Realtors

Multiple Listing Exposure
Senior Real Estate Specialist

Accredited Buyer Representation
Seller Representation
IRS 1031 Tax Deferred Exchanges

Home Warranty Program Buyer & Seller
State & National Exposure
Visit our popular website
easternoregonrealty.net



Jerry Franklin
541-820-3721



Traci Frazier
541-620-0925



Pete Teague
541-620-0841

**Stop by our office anytime at the OLE Bank building
160 East Main, John Day, OR**

***"We Don't Know Any Strangers -
Just Friends That We Haven't Met Yet"***

541-575-2121

**Quality Service - Experienced Agents
Satisfied Customers - Lasting Friendships**

THINGS TO DO

Take a Hike

Ready to stretch your legs? Grant County offers a wide range of hiking adventures, from short loops to multiday treks. From a stroll around a tranquil lake to summiting a mountain peak, hikers of all abilities will find something to love. Here are a few of our favorite trails.

Challenging

Strawberry Mountain Wilderness loop

For experienced hikers with an adventurous spirit, this lollipop loop provides a stunning sampler of the best the Strawberry Mountain Wilderness Area has to offer in a relatively compact but still challenging package. Covering anywhere from 18 to 21 miles, depending on which variations you choose, the route takes in several high country lakes, climbs high mountain passes and offers sweeping views, culminating in a 360-degree panorama from atop Strawberry Mountain, the high point of the range at 9,038 feet above sea level. While strong hikers can easily complete the trip in three days, you may want to stretch it out to four or even five to make the most of the trail's breathtaking scenery and serene campsites. Starting from Strawberry Campground, the route climbs steadily through a forest of grand fir and tamarack to gorgeous Strawberry Lake. If you're planning a leisurely itinerary, follow the shoreline until you find a campsite that suits your fancy for an easy first day. Otherwise, double back from the foot of the lake (or take the cutoff trail) to your next destination: Slide Lake. There's plenty of good camping to be had here or at Little Slide Lake, a short walk up a user trail from Slide Lake's head. Keep an eye out for mountain goats on the surrounding cliffs. From here you'll scale a rocky pass and drop down to High Lake, a green oasis in the midst of a large burn area. There are a number of fine campsites along the tree-lined shores. Next comes a long climb to another pass. From here you'll get your first views of Strawberry Mountain, with its striking summit pyramid rising from the end of a long ridge. At the next junction, you may want to drop your pack for a quick jaunt to the top of the peak. It's a workout — 2.2 miles round-trip, with 700 feet of elevation gain — but the rewards are spectacular views from the summit, with the strong possibility of more mountain goat

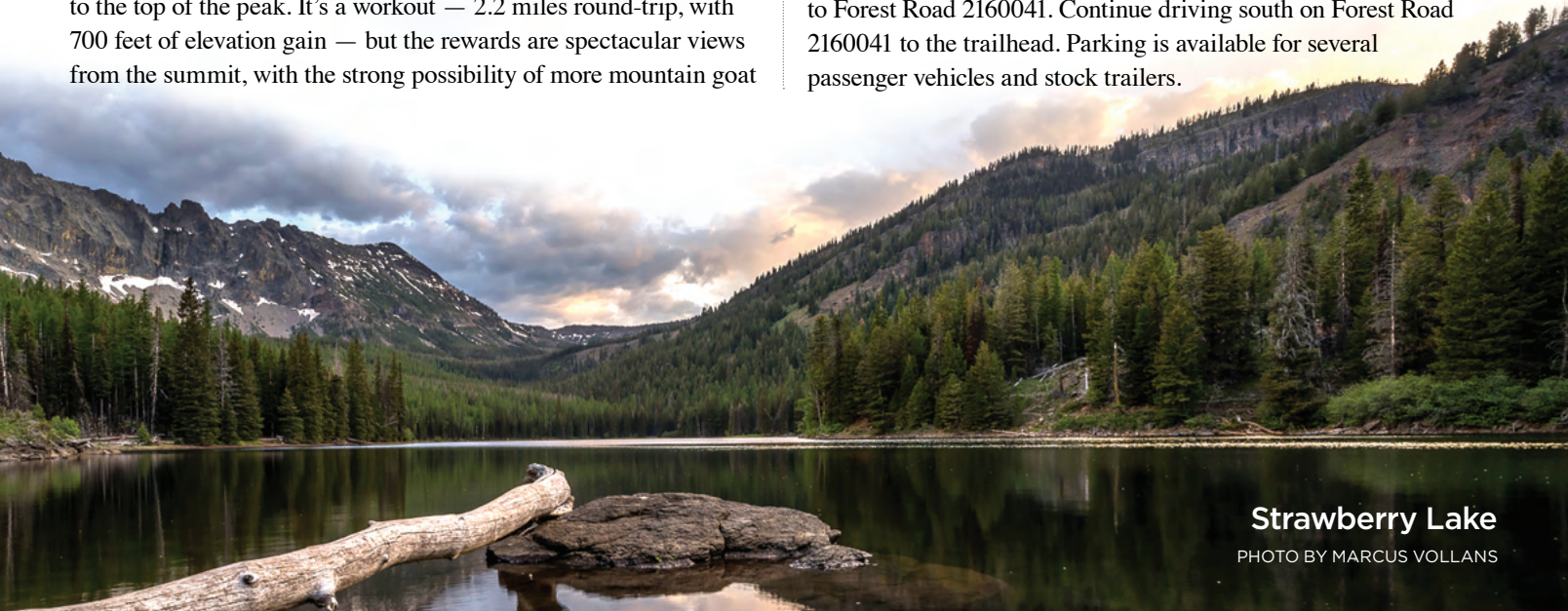
encounters. Back at the junction, you'll begin dropping down into Strawberry Lake's wooded basin. The meadows at the head of Onion Creek offer water and good camping, or you can continue hiking to spend your last night at Strawberry Lake, passing 60-foot Strawberry Falls along the way. Another camping option is Little Strawberry Lake, about half a mile off the main trail just above the falls. Either way, you'll have a short and easy last day back to your car.

Directions: From downtown Prairie City, turn south at a sign for Depot Park and Strawberry Lake. From the stop sign at a T intersection, go left for two blocks, then turn right at the Strawberry Campground sign onto Bridge Street, which soon becomes County Road 60 and then Forest Road 6001. The road ends after 10.7 miles (including about 7.5 miles of gravel) at Strawberry Campground, where you'll find a parking area and the trailhead just beyond the vault toilets.

Fields Peak

This moderately used trail is 4 miles long and gains 800 feet of elevation. Primarily used during hunting season, this trail gives access to Fields Peak and McClellan Mountain. The Fields Peak Trail is open to motorized vehicles, while the McClellan Mountain Trail is not.

Directions: From John Day, travel west on U.S. Highway 26 approximately 18 miles to Forest Road 21. Drive south on Forest Road 21 approximately 8 miles to Forest Road 2100115. There will be a sign along the road indicating the direction to McClellan Trailhead. Drive east on Forest Road 2100115 for ¼ mile to Forest Road 2160. Drive south on Forest Road 2160 for a short distance to Forest Road 2160041. Continue driving south on Forest Road 2160041 to the trailhead. Parking is available for several passenger vehicles and stock trailers.



Moderate

Strawberry Lake and Falls

This popular 1.5-mile trail takes hikers from the Strawberry Campground to Strawberry lake, gaining 700 feet of elevation along the way. The trail is readily accessible in summer and fall. The lake is great for fishing and swimming and has a trail that runs all the way around it. For a more challenging hike, keep walking along the left side of the lake and follow the signs to Strawberry Falls (2.8 miles), Little Strawberry Lake (3.4 miles) or, if you're feeling really strong, all the way to 9,038-foot Strawberry Peak (6.1 miles).

Directions: From downtown Prairie City, turn south at a sign for Depot Park and Strawberry Lake. From the stop sign at a T intersection, go left for two blocks, then turn right at the Strawberry Campground sign onto Bridge Street, which soon becomes County Road 60 and then Forest Road 6001. The road ends after 10.7 miles (including about 7.5 miles of gravel) at Strawberry Campground, where you'll find a parking area and the trailhead just beyond the vault toilets.

Easy

Blue Basin

Some of the most dramatic landscapes in Grant County are to be found in Blue Basin, part of the Sheep Rock Unit of the John Day Fossil Beds National Monument. Two hikes here range from easy to moderate. The Island in Time Trail is a 1.2-mile out-and-back that follows a gentle grade through a heavily eroded canyon to a baroque amphitheater of blue-green volcanic ash. Along the way you'll see replicas of some of the ancient mammal fossils found in the area. For a more strenuous outing with some truly eye-popping views, take the Blue Basin Overlook Trail, a 3.2-mile loop with around 1,100 feet of elevation gain. The route climbs through bunchgrass and juniper to a ridgetop vantage with stunning vistas of the basin, Saddle Butte and the John Day River valley. For a deep dive into the region's fascinating geological history, stop off at the monument visitor center, which is packed with educational exhibits.

Directions: Head north on Highway 19 from its junction with Highway 26 in the spectacular Picture Gorge. Follow 19 for 5.4 miles, passing the monument visitor center on the left, to find the Blue Basin parking lot on the right.

Magone Lake Trail

This delightful 1.5-mile trail rings Magone Lake and has informational plaques spaced at intervals. A nearby campground has firepits and bathrooms, and there's a boat dock at one end of the lake. Readily accessible in summer and fall.

Directions: From U.S. Highway 26 between John Day and Prairie City, turn north on County Road 18 to Forest Road 3620. Go south on 3620 to Forest Road 3618. Turn west on the 3618 Road to the Magone Lake Day Use Area.



Malheur River



Strawberry Falls



Blue Basin



Slide Lake

SPIN YOUR WHEELS

Biking in Grant County

Bicycling

Cycle Oregon, the state's premier supported bicycle touring event, chose Grant County as the focal point for its signature weeklong ride in 2022, and with good reason: the John Day Valley and surrounding mountains and gorges offer a spectacular variety of scenery for two-wheeled travelers to enjoy.

Cyclists can revel in interesting geological formations throughout the Sheep Rock Unit of the John Day Fossil Beds National Monument and Picture Gorge, ride by hayfields and ranches and pedal through the towering pines of the Malheur National Forest.

With so much scenery on tap, the local biking community is growing with people moving to the area and enjoying the one-of-a-kind biking experiences that only Grant County can provide.

For additional cycling routes, visit ridewithgps.com

Mountain biking

Mountain biking is a sport that is steadily gaining ground in the county. There are several trails where mountain bikers can enjoy serene forest scenery with minimal traffic. The Eastern Oregon Trail Alliance is working on projects at the John Day Bike Park and Magone Lake. The bike park is already open, and a number of trails are open at what will ultimately be a 28-mile trail network at Magone Lake, including a 3.25-mile trail with many single-track features to enhance a biker's experience. This is an easy track for the family to enjoy.

Located next to the Seventh Street Sports Complex in John Day, the John Day Bike Park provides a little under 2 miles of single-track trails to ride as well as a pump and flow track. This is another area that is perfect for beginners and the family.

The Morrow/Grant County OHV Park in northern Grant County also has a variety of trails bikers can explore.

Local mountain bikers also shared a few of the trails they enjoy and noted that forest roads that are not specific to mountain biking also offer a great opportunity to take in the peaceful atmosphere.



Courthouse Rock

TIPS FOR MOTORISTS

- When passing cyclists, give them a wide berth, and ensure there is enough clearance to return to the lane without endangering other riders who may be farther ahead.
- When stopping a vehicle on a riding route, ensure no riders will be struck before opening the door. A cyclist who gets "doored" can be seriously injured.
- Be alert to changes in rider activity or position. Cyclists have the same rules and rights on the road as drivers.
- Slow down in riding areas.



551 W. Main, John Day • 541.575.1346

Wherever you travel in
GRANT COUNTY,
Les Schwab is there!

Tires • Wheels • Brakes • Batteries • Alignment • Suspension • Sudden Service

Mountain bike trails

North Fork Malheur Trail

This serene forest path travels through a canyon and along the North Fork Malheur Wild and Scenic River. This area gives riders an opportunity to enjoy the solitude of the forest.

The trail is open in April. Length: 12.4 miles.

Directions from Prairie City: Turn onto South Main Street and follow to the junction with Bridge Street. Turn left onto Bridge Street and continue past the cemetery, where the road becomes County Road 62. Follow County Road 62 approximately 19 miles to the junction with Forest Road 16, then turn east onto Forest Road 16 and follow for approximately 11 miles to the junction with Forest Road 1675. Follow Forest Road 1675 for approximately 2 miles to a campground to find the trailhead.

Riley Creek Trail

This trail travels along Riley Creek and provides access to McClellan Mountain Trail 216 and the McClellan Mountain Semi-Primitive Roadless Area, which is closed to all motorized vehicles. The trail allows visitors a wonderful ride in a quiet setting. The trail is soft compacted earth starting at the Riley Creek Trailhead and continuing along McClellan Mountain Trail 216. After connecting to Fields Peak Trail, it becomes more rutted and steep. The trail traverses beautiful wooded areas connecting with McClellan Mountain Trail, providing beautiful views of McClellan Mountain and Riley Mountain. Parking is limited to passenger vehicles. Parking for vehicles pulling trailers is available at the junction of Forest Road 2190 and Forest Road 2190589.

The trail is open in June. Length: 2.2 miles

Directions from John Day: Take Highway 395 south approximately 15 miles to the junction with County Road 63. Follow County Road 63 west approximately 6 miles to Forest Road 21. Follow Forest Road 21 approximately 5 miles to the junction with Forest Road 2190. The trailhead is located at the end of Forest Road 2190.

Big Creek/Summit Prairie Trail

Situated on the former Hines Railroad Grade, this trail provides an easy ride. The trail travels along a steep grade, filled to accommodate railroad traffic, as well as deep cuts through rocky hills and flat open areas. The cut rocks show geological layers. The dirt and rock trail travels through stands of ponderosa and lodgepole pine trees. Riders will see a variety of wildflowers and wildlife in the area.

The trail is used by visitors to Lake Creek Youth Camp and other nearby campgrounds, including Big Creek Campground and Murray Campground.

The trail is open in May. Length: 12.5 miles

Directions from Prairie City: Turn onto South Main Street. Follow South Main Street to Bridge Street, turn left onto Bridge Street and continue past the cemetery. Bridge Street then becomes County Road 62. Follow County Road 62 approximately 19 miles to the junction with Forest Road 16. Travel west on Forest Road 16 to the junction with Forest Road 1600133. Travel on Forest Road 1600133 to the junction with Forest Road 1600097, where the trailhead is located.

Tips for riders

- Watch out for animals and people.
- Plan for a trip and make sure you are equipped for the ride. Some of these journeys take riders to secluded parts of the mountains where cellular signal can be spotty.
- Be sure to carry extra innertubes and jackets.

Bicycle rides

Ride 1 11 miles

On this short trip near town, riders see breathtaking views of Canyon Mountain and the John Day Valley. Leave John Day headed east on Highway 26 for 3 miles, turning right onto Dog Creek Road. After a little over a mile, the paved road takes a 90-degree turn onto Marysville Road/County Road 52. Riders descend into Canyon City and take a right turn, heading north on Highway 395 back into John Day.

Ride 2 14 miles

A pleasant, easy ride that includes 10 miles of paved road and 4 miles of very smooth-packed gravel. Start in Prairie City and travel south on South Main Street, then turn left on Southwest Bridge Street. Continue straight on through Summit Prairie Road for about 7 miles and then make a left turn onto County Road 61. You'll pass Riverside School House Bed and Breakfast and then take the first available left turn, looping back to Highway 26. Turn left on Highway 26 and you will be traveling back to Prairie City.

Ride 3 62 miles • John Day to Dayville, out and back

This simple trip provides views of ranchland and wildlife. Start in John Day and head west on Highway 26 to Dayville. Be sure to watch out for rumble strips while riding. Once you get to Dayville, which is about 31 miles away, there are public toilets and water in the city park. Riders can get a cup of coffee, enjoy local restaurants or grab a snack at the Dayville Mercantile. Return to John Day for the final 31 miles of the round trip.

Ride 4 100 miles Middle Fork of the John Day River (50 miles)

See river restoration for fish migration, forests, ranchland, wildlife, hot springs and rock cliffs on this route. Start at Bates State Park (from John Day, take Highway 26 for 31 miles east to Austin Junction, turn left on Highway 7 and then left on County Road 20). Travel west on County Road 20 until you reach the end of the road at Highway 395. Cross Highway 395 and continue straight until you end at Ritter Hot Springs (mile 50).

Ride 5 138 miles • two-day trip • John Day to Spray

See Picture Gorge, the John Day River, the John Day Fossil Beds National Monument and orchards on this long route. Start in John Day and ride west on Highway 26 to Dayville, which is about 31 miles. Then continue to Picture Gorge and turn right on Highway 19. If a break is needed, the Thomas Condon Paleontology Center is available about 2 miles ahead on Highway 19. Continue on State Highway 19 until you make it to Kimberly. In Kimberly, there will be another opportunity for a break. Continue on Highway 19 for 13 miles until you reach Spray. A motel, minimart, camping and swimming are available in Spray. Return to John Day by the same 69-mile route.

The Old West Scenic Bikeway 174 miles

One of 17 Oregon Scenic Bikeways, this challenging trek meanders through mountains and gorges with plenty to see along the way, including the Strawberry Mountains, the covered wagon overlook, the John Day River and the John Day Fossil Beds National Monument.

Starting at the Kam Wah Chung State Heritage Site in John Day, the bikeway travels east on Highway 26 through Prairie City to Austin Junction. There the route turns left onto Highway 7 for about a mile before turning left again onto County Road 20. The bikeway follows the Middle Fork John Day River for about 40 miles to Highway 395 and turns left for another 13 miles to Long Creek. Taking a right onto Highway 402, the route continues through Monument to Kimberly, where it turns left onto Highway 19. The route travels south through the John Day Fossil Beds National Monument and then turns left onto Highway 26 through Picture Gorge, Dayville and Mt. Vernon before returning to John Day.

SPIN YOUR WHEELS

Motorcycle Riding

in Grant County

Whether you're looking for a long, adventurous ride with friends or a brief trip to admire the beautiful countryside, Grant County has so much to offer motorcycle enthusiasts. Minimal traffic, chances to meet other like-minded bikers, multiple restaurants in multiple cities and many curves on the highway are some attributes riders will enjoy.

Whether you're out for a casual afternoon ride or dedicate a day for traveling, Grant County has something for every biker.

Tips for riders

- Depending on the time of year, watch out for gravel on the road.
- Be aware of your surroundings and watch out for animals.
- Plan for a trip and make sure you are equipped for the ride.
- Some of these journeys take riders to secluded areas in the mountains where cellular signals can be spotty.

Motorcycle rides

Ride 1 65 miles

Leave John Day headed west on Highway 26 approximately 18 miles to Forest Road 21 (sign reads Fields Creek, Murderers Creek). Turn left on Forest Road 21. Be sure to turn left where the road T's at Murderers Creek as the right fork becomes gravel after a few miles. Stay on Forest Road 21 to Paulina/Izee Highway (County Road 63) and turn left, going approximately 4 miles to Highway 395. Turn left and go approximately 17 miles to Canyon City and John Day. This ride is gorgeous and provides opportunities to see wild horses, deer and elk.

Ride 2 85 miles

Leave John Day headed east on Highway 26 for 13 miles to Prairie City. Turn right on Main Street and follow to the junction with Bridge Street. Turn left onto Bridge Street and continue past the cemetery, when the road becomes County Road 62. Follow County Road 62 approximately 19 miles to the junction with Forest Road 16. Turn right on Forest Road 16 and travel east approximately 36 miles until you reach Seneca. Turn right on Highway 395 and travel north approximately 26 miles back to John Day. This is an easy scenic loop for riders and provides multiple places to stop and enjoy the mountains and animals in the area.

Ride 3 108 miles

Leave John Day headed west on Highway 26 to Mt. Vernon. Turn right at the intersection and travel north through Long Creek on Highway 395. Turn right on County Road 20, ride approximately 34 miles to Highway 7. Turn right on Highway 7 and go about 1.5 miles to the intersection with Highway 26 at Austin Junction. Turn right on Highway 26 and ride over Dixie Summit and into Prairie City. Continue traveling 13 miles on Highway 26 back to John Day.

Ride 4 125 miles

Leave John Day headed west on Highway 26 through Mt. Vernon and Dayville. In Picture Gorge, approximately 7 miles west of Dayville, turn north on Highway 19 and travel past the Thomas Condon Paleontology Center. At the Kimberly Store, turn right to go through Monument to Long Creek. In Long Creek, turn right on Highway 395 and drive south to Mt. Vernon. Turn left on Highway 26 and head east back to John Day.

Ride 5 197 miles

Leave John Day headed east on Highway 26 through Prairie City. At Austin Junction turn left on Highway 7 for approximately 25 miles, and after you cross the railroad tracks watch for the sign for Sumpter. Turn left and it's 2-3 miles into Sumpter. From Sumpter go north on the same road for approximately 19 miles to Granite. Continue west on Highway 244 to Highway 395. Turn left again and take Highway 395 south to Mt. Vernon and Highway 26. Turn left on Highway 26 and head back to John Day, which is approximately 8 miles.

Depot RV Park

20 Full RV Hookups - 50 amp
Covered Picnic Area
Playground
Tent Sites & Shower Facility
Quiet Setting
Wi-Fi

4 blocks south of Hwy 26 on Main Street
Prairie City • 541-820-3605
cityofprairiecity.com

DP HOME ENTERTAINMENT

Your Local Electronics Store

137 E. Main Street, John Day 541-575-1637

Better Blooms & GARDENS

For all your gardening needs.

541-820-3329
65153 Highway 26
Between Prairie City and John Day

Enjoy John Day Valley's mild climate and clear skies. Play all year round on great fairways and greens.

- Cart & Club Rentals Available
- Great Rates!

JOHN DAY GOLF COURSE • 541.575.0170

27631 Golf Club Rd., One Mile West of John Day

HAVEN HOUSE Retirement Center

Retirement & Assisted Living Facility • Nursing Home

Haven House is located on a full block in downtown Fossil, Oregon. We offer easy access to area services that include: general store, beauty shops, medical clinic, post office, restaurants, churches, senior center, museum and library. Haven House is always open to friends, family and community members, providing a warm, friendly supportive atmosphere.

Haven House

714 Main St, Fossil, OR 97830
Phone: (541) 763-4651
havenhouserc@gmail.com

Bates State Park

28 primitive sites:
Tent or RV, day use areas with restrooms

BATES, OREGON
1 mile north of Hwy 26 & Hwy 7 Junction

oregonstateparks.org

The Blue Mountain Eagle invites you to explore the scenic & wild beauty of Grant County

Blue Mountain EAGLE

Grant County's newspaper since 1868

195 N. Canyon Blvd., | MyEagleNews.com
John Day, Oregon | 541-575-0710

Clyde Holiday State Park

31 sites, toilets, water, showers, hiking, tent/RV sites, electric

MT. VERNON, OREGON
2 miles east of Mt. Vernon
541-932-4454

Off-roading in Grant County

Grant County offers miles of trails for those looking to ditch the blacktop for a motorized off-road experience. The remote, rugged and rocky terrain is ideal for ATVs, dirt bikes and jeeps.

Riders who have traversed the wild country in the past have raved about the remoteness of the area and the opportunities to enjoy the mountains, streams and forests uninterrupted.

Two great riding areas for ATVs and dirt bikes can be found at Little Canyon Mountain near Canyon City and the Morrow/Grant County OHV Park, 82 miles northwest of John Day off Highway 207 (35 miles south of Heppner), which offers trails for beginners all the way up to experienced riders.

Little Canyon Mountain

A short drive from Canyon City will take you to this popular recreation spot that is open year-round.

Turn onto East Main Street from Highway 26. The road is also called Marysville Road and County Road 52.

A kiosk on site shows designated routes for motorcycles, ATVs and jeeps.

BLM officials note that to the southeast is land designated by the Forest Service as Strawberry Mountain Wilderness, which is closed to off-road vehicle use. Riders should also avoid private property and active mining claims. They warn conditions are dangerous when the ground is muddy or icy.

Morrow/Grant County OHV Park

There are plenty of trails and plenty of amenities at the Morrow/Grant County OHV Park, north of Spray on Highway 207. Open season is May through December, depending on weather, and there is a limited riding area open during the off-season.

The park boasts 200 miles of trails (20 miles are jeep-accessible), including routes for a variety of skill levels. Some areas have novice and advanced trail systems in the same area for family fun.

There is an RV park, which has tent spaces and cabins available for rent, with ADA restrooms and showers nearby. Wi-Fi is available in open season, and certain areas allow for cell service, including at the main entrance and near the stop sign at Highway 207.

Day-trail riding is free, and there are picnic areas. Small stocked fishing ponds, a hiking trail and a golf driving range provide more recreation opportunities.

Volunteer EMTs are around on most weekends during open season, and law enforcement is on patrol year-round. During the off-season, drive past the main entrance on Forest Road 21, travel about 3 miles and turn right at Forest Road 2128 (a sign reads “day use”), travel about 1 mile and unload in the day-use area on the right-hand side.

Park officials remind the public to stay safe and aware of your surroundings and to avoid riding alone. Wear appropriate riding gear, including a helmet and protective gear.



**SEE WHAT'S
POSSIBLE
THE EASTERN EDGE**

eou.edu

**OREGON'S RURAL
UNIVERSITY**



**EASTERN OREGON
UNIVERSITY**



*Eastern Oregon's
Professional Land Surveyors*

**PROPERTY • TOPOGRAPHIC
CONSTRUCTION • WATER RIGHTS
LAND PARTITIONS**

Licensed Oregon Professional Land Surveyors

541-575-1251

541-620-0676



The helpful place.

CRAFTSMAN®

Nydam's **ACE Hardware**

Boyd Bears • Large Kitchen Center • Specialty Candles • Great Gift Selection



652 W. Main, John Day • 541-575-0549

Remington kershaw Nikon BURRIS LEUPOLD WINCHESTER ASE Bushnell



PARKS MAIN OFFICE

Reservations • Comments • Questions

365 W. Highway 74 • PO Box 428
Lexington, OR 97839

Email: mcparks@co.morrow.or.us

Reservations: 541-989-8214

Main Office: 541-989-9500

**ANSON WRIGHT PARK
CAMPGROUND**

47500 Hwy 207 - Spray-Heppner
Heppner, OR 97836

**CUTSFORTH PARK
CAMPGROUND**

58430 Willow Creek Rd
Heppner, OR 97836

Reservations: 541-989-8214



MORROW COUNTY OHV PARK CAMPGROUND

71000 E. Morphine Ln, aka 71000 FS Rd 21
Heppner, OR 97836

Reservations: 541-989-8214

www.morrowcountyparks.com

A scenic 18 hole golf course
located in Historic Baker City, Oregon.
OPEN 7 DAYS A WEEK



QuailRidgeBakerCity.com



**QUAIL RIDGE
GOLF COURSE**

Cart & Club Rentals | Lessons available
Family-friendly & Fun

(541) 523-2358



Barebones Bar & Bowling Alley

Bowling
8 Lanes
Air Hockey
Foosball
Pool
Arcade Games

Bring the whole team. Seating for large groups.

Family Friendly
Noon to 8 p.m.


**Pizza,
Burgers
& More!**

679 W. Main Street, John Day, OR
541-792-7151



- **Guns**
- **Ammo**
- **Accessories**
- **Special Orders**
- **Gunsmithing**

Facebook
Target Practice LLC
targetpracticellc@outlook.com
541-792-7170
166 SE Dayton St, John Day, OR 97845




**BARE BONES
ESPRESSO**

Bare Bones Espresso
★ COFFEE LOYALTY CARD ★
Buy 9 cups and get 10th for free!



671 W. Main
John Day, OR
541-575-2857

Express Shop Located In Smoke Shop
or Drive Through 5:30am-3pm Daily




**Suds
PUB**

2pm - close
130 N. Mountain Blvd
Mt Vernon, Oregon
541-932-4333

- Covered Deck over looking the creek.
- Friday Night Treager Smoked Meats






~ Explore, Discover, Feel the Majesty ~

www.harneycounty.com

SPIN YOUR WHEELS

Journey Through Time

A scenic byway into the past

History comes to life in Oregon's Journey Through Time, an auto route that loops through Northeastern Oregon.

Along the way, visitors are treated to stunning scenery. It's a modern-day tour that links the land's prehistoric past, the influx of white settlers on the Oregon Trail and the fabled allure of gold.

The scenic byway departs from Interstate 84 at Biggs Junction and follows Highway 97 south to Shaniko, where it turns onto Highway 248 to Antelope and Fossil. From there, it joins Highway 19 through Spray and into Grant County at Kimberly. After traveling through the John Day Fossil Beds National Monument, Highway 19 meets Highway 26, where the byway travels east through Dayville, John Day and Prairie City before climbing over Dixie Summit. At Austin Junction, the route turns north onto Highway 7 and out of Grant County to Baker City.

If you take the journey, don't miss these stops in Grant County:

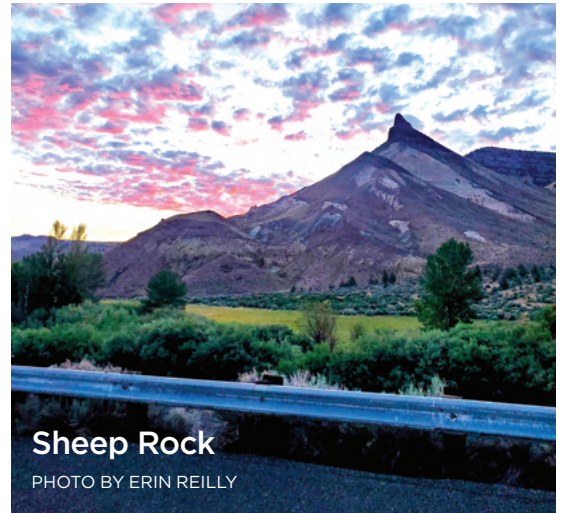
- **Kimberly**, a former stage stop on a fertile river delta that still boasts orchards producing a bounty of cherries, peaches, apricots, apples and pears.
- **John Day Fossil Beds National Monument**, with picnic areas, hiking trails and a visitor center. Get a short course on the 40 million years between the extinction of the dinosaurs and the start of the Ice Age.
- **Dayville**, a former stage stop on The Dalles Military Road.
- **Mt. Vernon**, a quiet community once noted for lively horse races and hot springs.
- **John Day**, where the Kam Wah Chung State Heritage Site recalls the Chinese workers who settled there during the railroading and gold mining days of the late 1800s. The Grant County Ranch and Rodeo Museum paints another picture of the region's agricultural roots.
- **Prairie City**, a bustling shipping point for the old Sumpter Valley Railroad during the logging heyday in the 1900s, nestled below Strawberry Mountain.
- **The Covered Wagon Overlook** on Highway 26, east of Prairie City, commemorating the arduous journey of the pioneers.



Blue Basin



Blue Basin



Sheep Rock

PHOTO BY ERIN REILLY



551 W. Main, John Day • 541.575.1346

Wherever you travel in
GRANT COUNTY,
Les Schwab is there!

Tires • Wheels • Brakes • Batteries • Alignment • Suspension • Sudden Service



Madden Realty

237 S. Canyon Blvd, John Day, OR

www.maddenrealtyeasternoregon.com

541-575-0990

Licensed in the State of Oregon

Your Hometown Realtors



#213 Hobby Farm!

7.45 acres, 1991 MH with stick-built addition, 3 bed, 3 bath, 2,418 sq ft, upgrades, large mud-room, open concept, river frontage, water rights, pastures, machine shed, 51239 HWY 26, Mt. Vernon

\$439,000



#247 Large Home!

1927 home with 1,887 sq ft and 1,235 basement that has potential for a rental space. Original hardwood floors, mini splits, comp roof 2019, vinyl windows, fresh exterior paint, updated bathroom and flex space. 309 E. Main St, John Day

\$265,000



#216, 217, 218 & 223

Subdivision Lots!

Canyon mountain views, city services stubbed to each lot, underground power, upscale subdivision, CC&R'S to protect your investment, Elk View Drive, Canyon City

\$45,000-\$50,000



#237

14.13 Acres!

Expansive views in every direction. Build your custom home or bring in a manufactured home. Borders a paved road that is maintained year around. Minutes from National Forest. Laycock Drive, John Day

\$89,000



#225 Small Town Living!

Outdoor enthusiast here is your chance to own a get away property minutes from Malheur National Forest, 650 sq ft, 2 bed, 1 bath, additional structure w/laundry, bathroom and loft. 104 3rd Street, Seneca

\$135,000



62 Acres!

62 Recreational acres bordering public land on 3 sides. Borders East Fork Beech Creek on small portion of SW boundary. Build a road and bring your RV or have your own private camp spot. Zoned Primary Forest. East Beech Creek Lane, Mount Vernon

\$155,000



Call today to find out what is currently on the market in Grant County

De Ann Sandor Michal Madden Lindsey Madden

Broker

Principal Broker

Principal Broker

360-690-5233

541-620-4408

541-792-0031

deannsandor@gmail.com

Michal.madden@yahoo.com

Lmadden88@outlook.com

Oregon Trail Well Service LLC



541-620-1936

Kevin Moles

**Water Well Drilling &
Pump Repair**

WWC#1961

CCB#212297

Explore

April

Dayville Easter Egg Hunt & Bunny Hop 5K

541-987-2188 | gcoregonlive.com/cities/dayville | dville@ortelco.net

8th - Second Saturday Series Dayville Dancehall

541-987-2188 | gcoregonlive.com/cities/dayville | dville@ortelco.net

Lake Creek Youth Camp

541-575-1900 | grantcountyoregon.net/217/Fairgrounds | winegarm@grantcounty-or.gov

15th - For the Love of Golf Scramble

541-575-0170 | johndaygolfclub@gmail.com

Rocky Mountain Elk Foundation Dinner & Auction

541-575-1900 | grantcountyoregon.net/217/Fairgrounds | winegarm@grantcounty-or.gov

May

6th - Saki Scramble

541-575-0170 | johndaygolfclub@gmail.com

13th - Second Saturday Series Dayville Dancehall

541-987-2188 | gcoregonlive.com/cities/dayville | dville@ortelco.net

13th - Club Memorial Scramble

541-575-0170 | johndaygolfclub@gmail.com

Cinnabar Mountain Play Days

541-575-1900 | grantcountyoregon.net/217/Fairgrounds | winegarm@grantcounty-or.gov



Ty Evans Mule Clinic

541-575-1900 | grantcountyoregon.net/217/Fairgrounds | winegarm@grantcounty-or.gov

Quilt Show

541-575-1900 | grantcountyoregon.net/217/Fairgrounds | winegarm@grantcounty-or.gov

20th & 21st - Jackson Razzle Dazzle

541-575-0170 | johndaygolfclub@gmail.com

Grant County Chamber Grape & Grain

541-575-1900
grantcountyoregon.net/217/Fairgrounds
winegarm@grantcounty-or.gov

June

10th - Second Saturday Series Dayville Dancehall

541-987-2188 | gcoregonlive.com/cities/dayville | dville@ortelco.net

16th & 17th - '62 Days Celebration

541-575-0509 | townofcanyoncityor.com
tocc1862@ortelco.net

Gold Rush Run & Walk

541-575-0509 | townofcanyoncityor.com
tocc1862@ortelco.net

17th & 18th - Jack N' Jenny Couples Tournament

541-575-0170
johndaygolfclub@gmail.com

Cinnabar Mountain Playdays Youth Rodeo

541-575-1900 | grantcountyoregon.net/217/Fairgrounds | winegarm@grantcounty-or.gov

BMW Riders of Oregon Rally

541-575-1900 | grantcountyoregon.net/217/Fairgrounds | winegarm@grantcounty-or.gov

Calvary Horse Camp

541-575-1900 | grantcountyoregon.net/217/Fairgrounds | winegarm@grantcounty-or.gov

Blue Mountain Hospital Health Fair

541-575-1900 | grantcountyoregon.net/217/Fairgrounds | winegarm@grantcounty-or.gov

24th - Thadd's Place Golf & Gala

541-575-0170 | johndaygolfclub@gmail.com



July

2nd - Firecracker 2x2 Golf Tournament

541-575-0170 | johndaygolfclub@gmail.com

4th - Dayville 4th of July Celebration

541-987-2188 | gcoregonlive.com/cities/dayville | dville@ortelco.net

4th - Long Creek Founders Day Picnic

541-421-3601 | gcoregonlive.com/cities/long-creek | citylc@centurytel.net

4th - Monument 4th of July Fun Festival

541-934-2025 | cityofmonument.com | cityofmonument@centurytel.net

4th - Prairie City 4th of July Celebration

541-820-3605 | prairiecityoregon.net | pchall@ortelco.net

4th - Silvies Fourth of July Celebration

541-573-5150 | <https://www.silvies.us/>

8th - Blue Mountain Healthcare Foundation Benefit Scramble

541-575-0170 | johndaygolfclub@gmail.com

Cinnabar Mountain Play Days

541-575-1900 | grantcountyoregon.net/217/Fairgrounds | winegarm@grantcounty-or.gov

28 thru 30th - Prairie City Fiber Fest

541-820-3605 | prairiecityoregon.net | pchall@ortelco.net



2023 Grant County Calendar of Events

22nd & 23rd Wapiti Golf Tournament

541-575-0170 | johndaygolfclub.com |
johndaygolfclub@gmail.com

August

4th & 5th - Grant County ICA Rodeo

541-575-1900 | grantcountyoregon.net/217/
Fairgrounds | winegarm@grantcounty-or.gov

5th & 6th Two-Man Best Ball Golf Tournament

541-575-0170 | johndaygolfclub.com |
johndaygolfclub@gmail.com

6th - Grant County Junior Rodeo

541-575-1900 | grantcountyoregon.net/217/
Fairgrounds | winegarm@grantcounty-or.gov

9th thru 12th - Grant County Fair

541-575-1900 | grantcountyoregon.net/217/
Fairgrounds | winegarm@grantcounty-or.gov

18th - Lowdown Drifters at Sels' Brewery

541-575-0329 | www.facebook.com/
whiskeygulchgang | whiskeygulchgang@
gmail.com

19th & 20th - Club Championship

541-575-0170 | johndaygolfclub.com |
johndaygolfclub@gmail.com

September

2nd - Cross Country Golf Scramble

541-575-0170 | johndaygolfclub.com |
johndaygolfclub@gmail.com



16th - Oktoberfest at Sels' Brewery

541-575-0329 | www.facebook.com/
whiskeygulchgang | whiskeygulchgang@
gmail.com

16th & 17th - Last Chance Golf Scramble

541-575-0170 | johndaygolfclub.com |
johndaygolfclub@gmail.com

October

7th - Rally for the Cure Golf Scramble

541-575-0170 | johndaygolfclub.com |
johndaygolfclub@gmail.com

Dayville Scarecrow Contest

541-987-2188 | gcoregonlive.com/cities/
dayville | dville@ortelco.net

November

12th - Golf Thanksgiving Dinner

Information needed

Rodeo Court Coronation Dinner

541-575-1900 | grantcountyoregon.net/217/
Fairgrounds | winegarm@grantcounty-or.gov

Christmas on the Prairie

541-820-3605 | prairiecityoregon.net |
pchall@ortelco.net

December

1st - Carrie Young Memorial Dinner & Auction

541-620-2098 | carrieyoungmemorial.
weebly.com | www.facebook.com/
CarrieYoungMemorial

Dayville Christmas Lighting Contest

541-987-2188 | gcoregonlive.com/cities/
dayville | dville@ortelco.net

Dayville Community Christmas Celebration

541-987-2188 | gcoregonlive.com/cities/
dayville | dville@ortelco.net

Blue Mountain Hospital Auxiliary Bazaar

541-575-1900 | grantcountyoregon.net/217/
Fairgrounds | winegarm@grantcounty-or.gov

Timber Truckers Light Parade

Leslie Traylor | 541-620-4032

January 2024

Snowflake Scramble

541-575-0170 | johndaygolfclub.com
johndaygolfclub@gmail.com

February 2024

Daddy Daughter Dance

541-575-0110 | jdccparksandrec.org
jdccparks.rec@gmail.com

Mother-Son Adventure Night

541-575-0110 | jdccparksandrec.org
jdccparks.rec@gmail.com

March 2024

Annual Golf Club Meeting

541-575-0170 | johndaygolfclub.com
johndaygolfclub@gmail.com

Strawberry Mountain Gun & Knife Show

541-575-1900 | grantcountyoregon.net/217/
Fairgrounds | winegarm@grantcounty-or.gov



**STOP BY TODAY FOR
INCREDIBLE OFFERS
AND UNBEATABLE
SERVICE.**



**JOHN DAY POLARIS
821 W HWY. 26
JDPOLARIS.COM**

WARNING: Polaris® off-road vehicles can be hazardous to operate and are not intended for on-road use. Driver must be at least 16 years old with a valid driver's license to operate. Passengers, if permitted, must be at least 12 years old. All riders should always wear helmets, eye protection, and protective clothing. Always use seat belts and cab nets or doors (as equipped). Never engage in stunt driving, and avoid excessive speeds and sharp turns. Riding and alcohol/drugs don't mix. All riders should take a safety training course. Call 800-342-3764 for additional information. Check local laws before riding on trails. ©2017 Polaris Industries Inc.



**Come check out Gregg's inventory of
efco products at Polaris.**

**Blowers, earth augers, pruners
& much more**

Ask about our 5 year warranty

LS Tractor

Everything you need
to get the job done fast.

R3039-38.5HP



Now available at
John Day Polaris



**Locally Owned • Serving North East Oregon
and South East Washington Since 1995**

THINGS TO DO

Go to the Snow

Winter sports enthusiasts will find plenty of ground for cross-country skiing and 500 miles of groomed snowmobile trails along with four snow parks in the Grant County area. Snowmobile trails are groomed by volunteers from local snowmobile clubs. A state Sno-Park permit is required for parking at all snow parks. The permits cost \$25 and are available from the Department of Motor Vehicles and some local stores. They can also be purchased online at <https://tinyurl.com/24c9y3jm>. For more information about winter recreation, visit grantcountysnowballers.com.

Starr Ridge

The popular snow park at Starr Ridge features ample parking and primitive outhouse facilities. Across the highway is Starr Bowl, a popular sledding and tubing area for families with a warming hut. Cross-country skiers typically use the groomed snowmobile trails, while backcountry skiers and snowshoers can head east toward the wilderness area. Starr Ridge is on Highway 395 about 16 miles south of John Day.

Blue Mountain Summit

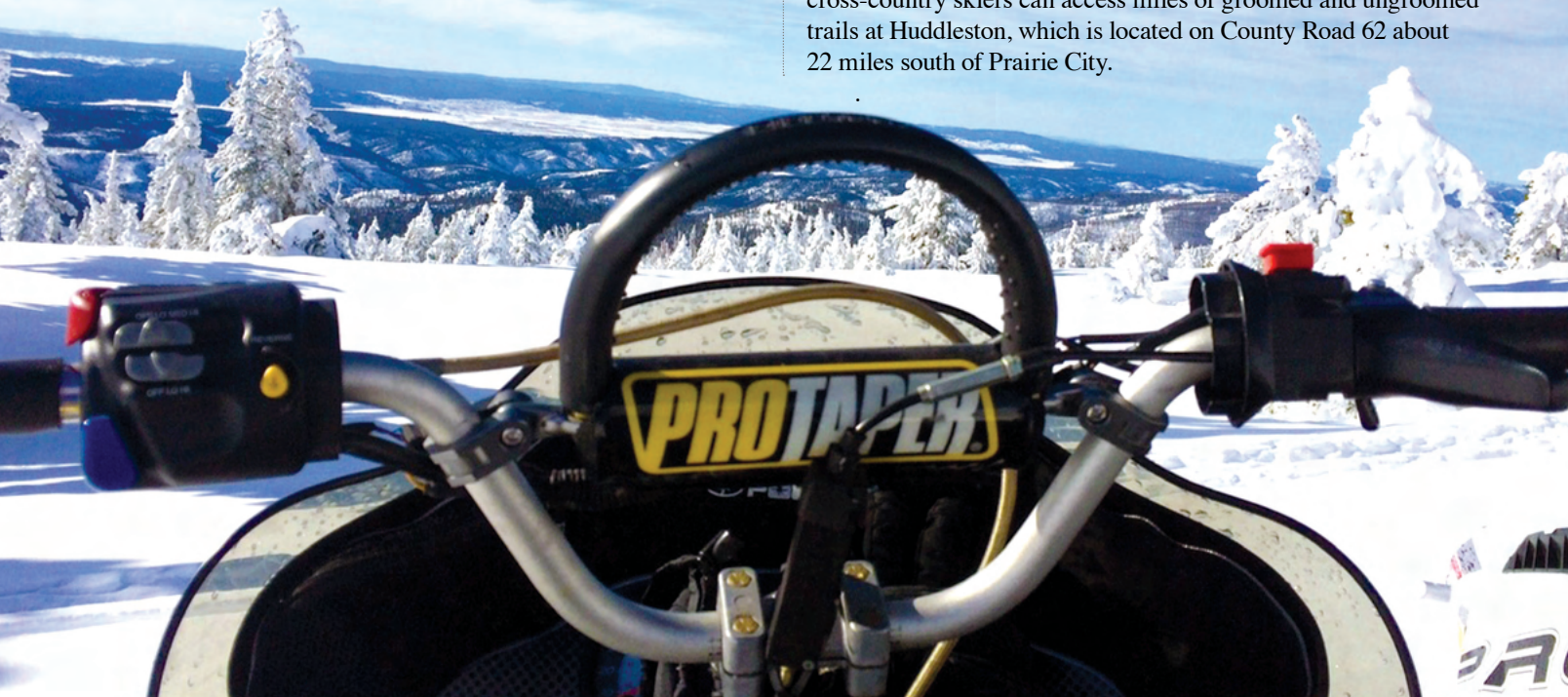
A new snow park has been developed on Blue Mountain Summit. Snowmobile trails groomed by three different clubs converge near the snow park, which is located on Highway 26 about 10 miles east of the Highway 7 junction.

Dixie

The old rope tow is currently out of commission, but there's still plenty of winter fun to be had at this snow park. Activities include sledding, innertubing and snowshoeing. There are also opportunities for snowmobiling and cross-country skiing on ungroomed trails. Located on Highway 26 about 9 miles east of Prairie City.

Huddleston

Snowmobilers can access hundreds of miles of groomed trails at the Huddleston Snow Park, which features a warming hut with a fireplace, restrooms and a large parking lot. The Skyline access is located about 1 mile before Huddleston. Snowshoers and cross-country skiers can access miles of groomed and ungroomed trails at Huddleston, which is located on County Road 62 about 22 miles south of Prairie City.



Explore

THINGS TO DO

Drop a Line

Countless bodies of water and miles of rivers and creeks make Grant County stand out for people looking for an aquatic diversion while in Eastern Oregon. Try your luck fishing for steelhead, trout, kokanee, bass and other species with locations ranging from remote — with a good hike required to access some sites — to right in town.

A big highlight in the county is Magone Lake, which offers an abundant amount of recreational opportunities, including fishing, swimming or just relaxing on the water. The 50-acre lake is stocked by the Oregon Department of Fish and Wildlife with 8- to 15-inch eastern brook and rainbow trout. It features a 1.5-mile trail skirting the water's edge, easy enough for everyone in the family to enjoy. There is also a sandy beach with great terrain for building sandcastles.

For fishing information, check the Oregon Sport Fishing Regulations booklet, available where sporting licenses are sold and online at www.dfw.state.or.us, or call 800-720-6339. Special fishing regulations apply in some waterways, as the John Day Basin is home to protected and recovering fish species.

PHOTO BY ROBERT G. BROWN



Fishing spots in Grant County

There are plenty of great fishing spots to explore in the Grant County area

1. Bull Prairie Reservoir — 27 acres, boat ramp; motors prohibited. From Spray, go 4 miles east on Hwy. 19 to Hwy. 207. Take 207 north 18 miles to FR 2039 and go 4 miles to lake. Rainbow, brook trout.

2. Cavender Pond — 15 acres on private land. From Monument go half-mile west on Hwy. 402; right on pond access road. Rainbow trout, largemouth bass.

3. Long Creek Pond — 2 acres, located 6 miles west of Long Creek just off Hwy. 402. Rainbow trout.

4. Jump Off Joe Lake — 5 acres in Umatilla National Forest. From Granite, take FR 10 west, then FR 45 south 4 miles to a pullout near trailhead. Hike 0.25 miles to the lake. Triploid brook trout.

5. Lost Lake — 15 acres in Umatilla Forest. From Granite, take FR 10 west to FR 45. Go south about 0.5 miles, turn left on FR 020 to gate. Hike 2 miles to lake. Rainbow trout.

6. Olive Lake — 160 acres in Umatilla Forest. From Granite, go west on FR 10 for 11 miles. Boat ramp, docks, camping available. Rainbow trout, kokanee.

7. Wildcat Pond — 2 acres in Malheur National Forest. From Hwy. 395, take Co. Road 88 west 8 miles, go left on 741 for 3.5 miles to FR 3955, then right 4 miles to FR 250. Rainbow trout.

8. Hog Creek Pond — 1 acre in Malheur Forest. From Hwy. 395 at Ennis Creek, take FR 3940 east 5 miles to FR 432, go left for 3.5 miles to 794 and 0.5 miles to pond. Rainbow trout.

9. Magone Lake — 50 acres in Malheur Forest. From John Day, travel 9 miles east on Hwy. 26 to Keeney Fork Road. Go north 18 miles to FR 3620, then south 3 miles. Rainbow, brook trout.

10. Aldrich Gulch Pond — 0.5 acres on BLM land. Strenuous hike-in access only, 14 miles south of Dayville, then 0.5 miles east up Aldrich Gulch. No designated trail, Rainbow trout.

11. Wyllie Gulch Pond — 0.5 acre the Phillip Schneider Wildlife Area, 17 miles south of Dayville, then 3.5 miles up Murderers Creek to Wyllie Gulch. Hike-in access only, 3 miles up Wyllie Gulch, no designated trail, closed Feb. 1-April 14. Rainbow trout.

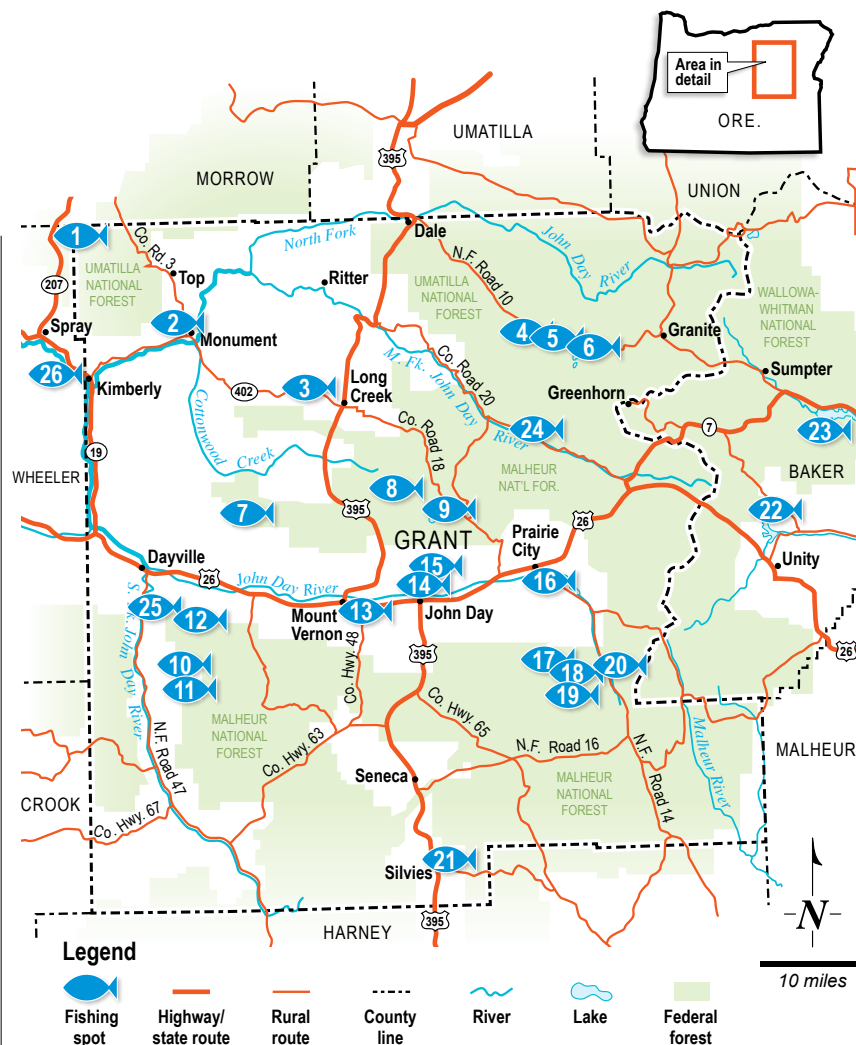
12. Aldrich Ponds — Two ponds, 5 and 8 acres, in Phillip Schneider Wildlife Area, 5 miles east of Dayville. From Hwy. 26 go south on Phillip Schneider Wildlife Area access road 6 miles to lot. Hike-in access only, 2 miles south on trail. Closed Dec. 1-April 14. Rainbow trout.

13. Holliday Park Pond — 3 acres near Holliday State Park, 0.75 miles east of Mt. Vernon on Hwy. 26, turn south on access road, 200 yards to pond. Rainbow trout.

14. Brandon's Pond — 2 acres near ODFW's screen shop facility off Patterson Bridge Road, John Day. Open 6:30 a.m. to 4 p.m. weekdays. Rainbow trout, largemouth bass.

15. Seventh Street Pond — 1 acre at Seventh Street Complex in John Day. Rainbow trout.

16. McHaley Pond — 1 acre on Confederated Tribes



NOTE: Unless specified, all locations open year round. *Closed until Memorial Day Weekend.

For more information on fishing in northeast Oregon, go to: myodfw.com/recreation-report

of the Warm Springs land. Take Hwy. 26 east from Prairie City 0.5 miles, turn south on ranch access road past tree nursery. Rainbow trout.

17. Strawberry Lake — 31 acres in the Strawberry Mt. Wilderness. Take Co. Road 60 south from Prairie City into Malheur Forest, continue on FR 6001 to trailhead. Hike 1.5 miles to lake. Rainbow, brook trout.

18. High Lake — 10 acres in the Strawberry Mt. Wilderness. From Seneca, head east on FR 16 for 13 miles to FR 1640. Go north on 1640 to end and trail head. Hike 1.5 miles to lake. Brook trout.

19. Slide Lake — 13 acres in the Strawberry Mt. Wilderness. Take Co. Road 60 south from Prairie City into Malheur Forest. Continue on FR 6001 to the trail head. Strenuous hike of more than 4 miles to lake. Brook trout.

20. Trout Farm Pond — 2 acres in Malheur Forest. From Prairie City, go south 15 miles on Co. Road 62. Look for Trout Farm sign, then turn west 100 yards. Rainbow, brook trout.

21. Poison Creek Reservoir — 27 acres on BLM land. 17 miles south of Seneca on Hwy. 395, take FR 17 east for 0.5 miles, turn north into reservoir. Rainbow trout, limit 2 trout per day.

22. Unity Reservoir — 926 acres, about 50 miles east of John Day off Hwy. 245 near Unity. Campsites, cabins, hiker/biker camp, ADA-accessible, RV dump station. Trout, bass and crappie.

23. Phillips Reservoir — 1,500 acres, along Hwy. 7 near Sumpter. Three campgrounds and two boat launches. Perch, bass and rainbow trout. Tiger trout and hybrid Muskie, stocked to help control perch, must be released if caught.

***24. Middle Fork John Day River** — 14-mile section from Camp Creek to Caribou Creek. Bank fishing access at Deerhorn, Middle Fork campgrounds. Trout fishing good May-October. Chinook salmon closed to fishing.

***25. South Fork John Day River** — 11-mile section from the first bridge to the mouth of Murderers Creek. Trout fishing good May through October.

26. John Day River — 26-mile section from Kimberly downstream to Service Creek. Steelhead from January through March, smallmouth from May through November. Channel catfish during summer months. Bank access and boat launches at Shady Rest, Spray City and Muleshoe parks.

THINGS TO DO

Gaze at the stars

With plenty of wide-open spaces and few city lights to clutter up the view, Grant County has some of the clearest night skies in the Lower 48 and is a great place to practice the growing hobby of astral photography.

Pack up your telescope, binoculars, camera and other stargazing gear and head to a high point, or just find a secluded spot to kick back and stare up at the sky — you will be well-rewarded with celestial sights.

Once you've been out in the darkness for about 15 minutes, you'll be surprised at how well your eyes adapt and how much you can see.

With a bit of internet searching you can find plenty of information about celestial objects, and online charts, updated by the month, will show you where to look for planets, stars and galaxies. There are also several meteor showers each year that provide a spectacular sky show.

PHOTO BY JUSTIN MORDENO



551 W. Main, John Day
541.575.1346

Wherever you travel in
GRANT COUNTY,
Les Schwab is there!

Tires • Wheels • Brakes • Batteries • Alignment • Suspension • Sudden Service


DALE STORE 48388 Hwy 395 N., Dale, OR
541-421-3484

**RIVER SHUTTLES
AVAILABLE**



GAS • PROPANE & GROCERIES Friendly Service

WE CAN TAKE YOU THERE



PEOPLE MOVER
Grant County Transportation

DIAL-A-RIDE
541-575-2370

John Day,
Canyon City,
Mt. Vernon,
Prairie City Areas
Monday - Friday
8 am - 6 pm

229 NE Dayton St.
John Day, OR 97845

**5TH ANNUAL
Prairie City
FIBER FEST**
July 29 & 30, 2023

- Workshops (Start July 28)
- Vendors (July 29-30)
- Yarn, Fleeces, Handmade Items



Prairie City in Eastern Oregon
for up-to-date information visit:
www.PrairieCityFiberFest.com





GIBCO
AG & INDUSTRIAL
541-575-2050
312 N. Canyon City Blvd., Canyon City

- Behlen Livestock Equipment
- CHS Payback & Nutrena Feeds
- Wide Variety of Tack
- Pro Pac Dog & Cat Food
- Powder River Dealer
- Keystone Barbed Wire & Rolled Wire
- Implements & Parts
- Baling Twine
- Headgates & Irrigation Supplies
- Cargill Salt
- Smart Lic Dealer
- Backwoods Water Troughs



THE TRAILHEAD
BIKE • SKI • SERVICE
BAKER CITY, OREGON

**YOUR OUTDOOR
RESOURCE
IN DOWNTOWN
BAKER CITY.**

**BIKES | SKIS | INFO
& MORE**

1828 Main Street
Downtown Baker City, Oregon
(541) 523 - 1668
TheTrailheadBakerCity.com



**Anthony
Lakes**
MOUNTAIN RESORT

**YEAR-ROUND
EASTERN OREGON
PLAYGROUND**

**WINTER & SUMMER
RECREATION IN YOUR
BACKYARD**

AnthonyLakes.com

Hit the Links

From the award-winning Retreat and Links at Silvies Valley Ranch to the John Day Golf Club, experienced and novice golfers alike have options to play on some of the best greens in the West.

The Retreat, Links and Spa at Silvies Valley Ranch

Golf Magazine named this gem the No. 3 Family Resort in North America in the publication's Top 100 Resorts issue for 2019-2020.

The Hankins and Craddock golf courses, reversible overlapping 18-hole courses designed by Dan Hixson, and the McVeigh's Gauntlet seven-hole ridge course were recognized respectively by Golf Magazine and Golf Digest as some of the best new courses in the world. Hankins was ranked No. 31 and Craddock No. 42 in Golfweek's 2022 Top Resort Courses in the United States.

On McVeigh's Gauntlet and the nine-hole, par-3 Chief Egan course, guests can play with a goat caddy for a truly unique golfing experience.

The newest additions are Claire's Courses, a reversible 18-hole putting course, and the Orange and Black Courses, all designed by Hixson.

This five-star resort south of Seneca features luxurious accommodations, top-of-the-line amenities and ranch-raised cuisine. For more information, visit silvies.us or call 1-800-SILVIES.

John Day Golf Club

The John Day Golf Club offers golfers a nine-hole regulation course that is open to both club members and visitors. The diverse terrain, flanked by high-desert hills, a tree-lined fairway, two sand bunkers and a pond with sturgeon and trout, offers a unique challenge for golfers.

Golfers can work on their strokes and their putts year-round at the driving range and putting green, located right outside the clubhouse. Golf carts are available for rent or golfers can bring their own. Select golf clubs are available to rent as well.

The club hosts tournaments and scrambles throughout the year. Visitors are encouraged to participate.

The recently remodeled clubhouse, which includes a full bar and a snack bar, also offers an additional dining room and a full kitchen that can be rented out for events. For more information, call the John Day Golf Club at 541-575-0170.





Fred Winegar/Broker
541-620-1506

**Amy Denman/
Principal Broker**
503-577-7029

**Wendy Cates
Principal Broker,
Owner**
541-620-4239

Debbie Brown/ Broker
541-419-8156

Mike Moore/ Broker
541-542-2059



**Come visit
us. We have
a lot to show
you!**



FREE ESTIMATES





**SEE YOUR
DESIGN
IN 3D!**

- Countertops
- Tile
- Flooring
- Carpet
- Area Rugs
- And Much More

THE FLOOR STORE

140 E Main St., John Day 541-575-1111

GRANT CO. FARMERS MARKET

The Grant County Farmers Market is located in downtown Canyon City with its amazing old town charm, green play space and parking galore.

**Every Saturday, June 17th through October 14th
October 20th and 21st Harvest Festival**

We offer locally grown produce, baked goods, canned items and lots more. We want to support our local food producers and the entrepreneurs in our community. We envision being a community gathering place on Saturdays. A place where we all can assemble, shop, sip coffee, watch our kids play in the park, catch up with old friends and enjoy a bite to eat.



**GRANT COUNTY
FARMERS
MARKET**

PO BOX 584, JOHN DAY 97845 • (541) 620-3152
GRANTCOUNTYFARMERSMARKET.COM
grantcofarmersmarket@gmail.com



**Under New
Ownership!**

**Come see us for all your
butchering needs!**

Steaks, Jerky, Pepperoni Sticks,
Protein Packs, Cheeses, Bacon,
Pork and Much More.

Russell's Custom Meats & Deli

235 N Canyon City Blvd, John Day • 541-575-0720
Open Mon-Fri 8 a.m. - 5 p.m.



Museums in Grant County



John Day Fossil Beds National Monument

Where: 32651 Highway 19, 8 miles west of Dayville

Dates: Year-round

Hours: Winter, 10 a.m. to 5 p.m.; summer, 9 a.m. to 5 p.m., daily except federal holidays between Thanksgiving and Presidents Day

Admission: Free

Phone: 541-987-2333

Web: nps.gov/joda

The John Day Fossil Beds National Monument is dedicated to the preservation and continuing research of the fossil plants and mammals that existed here millions of years ago. The monument is comprised of three geographically unique units: Clarno and Painted Hills in Wheeler County, and Sheep Rock in Grant County, which together cover nearly 14,000 acres.

Sheep Rock is home to the Thomas Condon Paleontology Center, the Historic Cant Ranch and seven hiking trails.

The paleontology center, which opened in 2005, is named for 19th century missionary and scientist Thomas Condon. Born in Ireland, Condon immigrated to New York and later traveled with his wife to Oregon, where he was known for his interest and expertise in geology. In 1865, while venturing across the state, he was the first to identify the scientific significance of the area that is now the John Day Fossil Beds.

The expansive 11,000-square-foot paleontology center is a state-of-the-art research facility where new discoveries continue to be made well into the 21st century. Visitors can peruse a vast array of fossils, exhibits, displays and information, and even watch scientists at work in the laboratory.

Across Highway 19 from the paleontology center is the Historic Cant Ranch and Museum, which was a working sheep ranch in the early 20th century.

The ranch house and museum are open only in summer, although visitors are welcome to tour outside areas and trails at any time.

Outdoor enthusiasts will also enjoy seven trails within the Sheep Rock Unit, ranging in length from ¼ mile to ¾ miles. Each offers its own breathtaking vistas, rock formations and colorful geologic layers. All are open year-round. Information and maps are available at the paleontology center.

Visitors to the John Day Fossil Beds are reminded that all fossils, rocks, plants and animals are fragile and protected, and may not be collected or disturbed. Anyone who sees a fossil is urged to take a photo of it and report it to a ranger.

PHOTO BY
CHARLES MCKENNA



Kam Wah Chung State Heritage Site

Where: 125 NW Canton St., John Day

Dates: May 1 to Oct. 31

Hours: 9 a.m. to noon and 1-5 p.m., daily

Admission: Free

Phone: 541-575-2800

Web: friendsofkamwahchung.com

Chinese immigrants were instrumental in the history of Grant County and Eastern Oregon, and nowhere is their influence more thoroughly preserved and honored than at the Kam Wah Chung State Heritage Site in John Day.

Loosely translated as “Golden Flower of Prosperity,” the Kam Wah Chung site includes an interpretive center on Northwest Canton Street and a museum on nearby Ing Hay Way. The latter, built in 1865 as a trading post and stage stop, was the longtime location of a successful business venture for two Chinese immigrants, herbal doctor Ing “Doc” Hay and businessman Lung On.

For 60 years, from 1888 to 1948, the enterprising pair ran a general store, practiced Chinese herbal medicine and performed religious rituals. Chinese miners, local residents and pioneers all benefited from Doc Hay’s treatments. The business also served as a vital social center for Chinese immigrants throughout Eastern Oregon.

After Hay’s death in 1952, the building was abandoned until 1967, when the city of John Day launched plans to restore it to its 1940s condition and turn it into a museum, per Hay’s request. Thanks to the hard work of Oregon State Parks and the Friends of Kam Wah Chung, visitors entering the museum today are treated to a step back in time to the bustling business days of Doc Hay and Lung On, almost exactly as they left it.

In 1973, the museum was listed on the National Register of Historic Places, and in 2005, it was designated a National Historic Landmark.

The interpretive center features videos and informational exhibits, unveiled in 2011, outlining Chinese influence in Eastern Oregon. A few years prior, the museum underwent nearly a year of renovations and repairs, which were unveiled at a lavish ceremony in 2008.

The museum is open to guided tours only, at the top of each hour, until 4 p.m. Tours are about 45 minutes long. Virtual tours are available at the interpretive center.

The site is slated for a major expansion in the next few years.

Free tickets are available at the interpretive center.



DeWitt Museum at Depot Park

Where: Bridge and Main streets, Prairie City
Dates: May 15 to Oct. 15
Hours: 10 a.m. to 5 p.m., Wednesdays through Sundays
Admission: \$3 per person
Phone: 541-820-3330

In addition to mining and lumber roots, Grant County was also once home to a thriving railroad. This slice of railroad history — and much more — is preserved at the DeWitt Museum, located in the heart of Prairie City.

Built in 1910, the two-story museum was originally a depot for the Sumpter Valley Railway. It was the only two-story depot along the railway line and the only one that's still on its original site.

The narrow-gauge line, which began rolling in 1890, ran from Baker City to Sumpter, and later to Prairie City. The passenger station, or Prairie City Depot, was the railway's terminus.

In the depot's heyday, a waiting area, baggage, freight and express rooms and the station agent's office were all on the ground floor. The agent's living quarters were on the second floor.

Railway service to Prairie City ended in 1933, although some passenger trains continued for a few more years.

Slated for demolition, the historic building was rescued thanks to the efforts of a local group of women. In 1976, it was listed on the National Register of Historic Places, though it remained unused until the mid-1980s, when it found new life as a community museum.

The DeWitt's artifacts were originally from the collection of local pioneers T. Gail and Peacha DeWitt, who ran a sawmill, dredge and ranch on the Middle Fork of the John Day River. Family artifacts were kept in several locations before finding a permanent home in the depot building in 1984.

Over the past 30-plus years, the collection has ballooned as more items were added. Visitors to the DeWitt will find a wide assortment of railroad memorabilia, mining and ranching tools, rocks and minerals, vintage household items, photos of local families and the town, books and much more. Each section and room of the two-story museum features a facet of local history.

Grant County Historical Museum

Where: 101 S. Canyon Blvd., Canyon City
Dates: May 1 to Sept. 30
Hours: 9 a.m. to 4:30 p.m., Tuesdays through Saturdays
Admission: Adults, \$4; seniors and veterans, \$3.50; children, \$2; ages 6 and under, free
Phone: 541-575-0362
Web: grantcountymuseum.org

It's appropriate that the Grant County Historical Museum is located in Canyon City, since that's where the county's existence was born. The discovery of gold in 1862 in nearby Whiskey Gulch attracted thousands to this area, which wasn't even a county yet, and was home to a few Native American tribes and traveling exploration parties and trappers.

The first items in the collection were gathered by early-1900s Canyon City resident Charley Brown, who was a postmaster and ran a general store and a gas station. In 1925, Brown bought an old saddle from someone, and soon — as the story goes — a deluge of local folks began beating a path to Brown, eager to sell relics from their homes. Soon, his small gas station on Washington Street overflowed.

Brown later sold the amassed goods to the Grant County Historical Society, and in 1953, local rancher Herman Oliver purchased a building for the present-day museum to house the growing collection.

The spacious building is a one-stop, comprehensive source for Grant County history, primarily the Canyon City and John Day areas. Visitors will be transported back in time to Grant County days gone by among vivid exhibits showcasing not only the area's rich gold mining days but Native American artifacts, day-to-day early pioneer life, business endeavors, Chinese influence in Eastern Oregon, ranching and lumber industries, rock collections and much more. There are also files of newspaper clippings, letters, documents, books, ledgers and an extensive catalog of vintage photographs. Even local residents are bound to learn something new upon a visit to this Grant County gem.

Next to the museum, visitors will also want to check out the jail from the onetime mining town of Greenhorn and the Joaquin Miller cabin. Miller, known as the "Poet of the Sierras," was a colorful character who held a lengthy list of titles including Grant County judge at age 29. The cabin was where he wrote and lived in Canyon City from 1864-1870.

Grant County Ranch and Rodeo Museum

Where: 241 E. Main St., John Day
Dates: May 1 to Sept. 30
Hours: 10 a.m. to 4 p.m., Thursdays through Saturdays, and group tours by appointment
Admission: Adults, \$3; children under 12, free
Phone: 541-575-0052 or 541-575-0747

Perhaps the truest image of Grant County is that of the cowboy and ranching way of life. One sure place where visitors will find a thorough collection of that wild and colorful legacy is at the Grant County Ranch and Rodeo Museum.

The museum is dedicated to celebrating the cowboy way of life in Grant County and honoring past, present and future local cowboys and cowgirls.

Several rooms showcase exhibits that are divided by category such as ranch, rodeo and Western arts and crafts. Displays include rodeo champion belt buckles, branding irons, cowboy poetry, knife collections, historical barbed wires, Grant County Fair and Rodeo Court costumes, trophy saddles of National Intercollegiate Rodeo Association champions as far back as 1959, photographs of Grant County cattle drives, documents, books and much more. Most of the artifacts and memorabilia have been donated.

A gala celebration marked the museum's opening on July 23, 2005. The following summer, four colorful paintings depicting ranch and rodeo scenes, the work of Mt. Vernon artist Patricia Ross, were installed on the exterior of the building.

The museum is a treat for travelers who may be unfamiliar with the Western, rural lifestyle.

Gear Up for Adventure

Auto coverage priced for you

Call me for a quote today

 **State Farm**

Jeanette M Radinovich
Agent

101 W Main Street
John Day, OR 97845
Bus: 541-575-2073
jeanetteradinovich.com
statefarm.com/agent/us/or/john-day

State Farm Mutual Automobile Insurance Company, State Farm Indemnity Company, Bloomington, IL, State Farm County Mutual Insurance Company of Texas, Richardson, TX



Paddle your way into an adventure with our outstanding paddle board rentals!

JD Outdoor & Power Equipment

727 West Main Street
John Day, OR 97845
541-575-1156
1-800-895-1788



OK Garage and Mini Mart
151 Hwy 395 N. ~ Long Creek, Oregon

Mini Mart: Food, Drinks & Spirit
Fuel: Diesel, E-10 Regular, NonEthanol Supreme & Propane



541-421-3344

Full Service Automotive Maintenance & Repair

\$171590-1

Boyer's Cash Store - Monument



Serving Grant County since 1927

Stock up on everything you need during a road trip, or an outing on the river.

- Groceries • Snacks • Gas • Diesel

\$171582-1

Winter Hours:
Open Thur-Mon
TH 7A-5P (BR/L)
FRI-SAT 7A-8P (BR/L/D)
SUN 1P-8P (L/D)
MON 7A-5P (BR/L)

(541) 448-2526

Austin House
75805 U.S. 26
Junction Hwy 26 & Hwy 7
austinhous26@gmail.com
http://austinhous26.com/



Love at First Sip



Log Cabin Espresso
John Day Polaris • 821 W. Hwy, John Day
541-575-5778

Family-Owned
JOHN DAY RIVER TRADING POST



- Groceries • ODFW License & Tags
- Fishing Gear • Non-Ethanol Fuel
- Boat & Paddle Board Rentals

8am-6pm Mon.-Sat., Sun. 10am-4pm
41345 Hwy. 19, Kimberly, OR • (541) 934-2060

\$173763-1

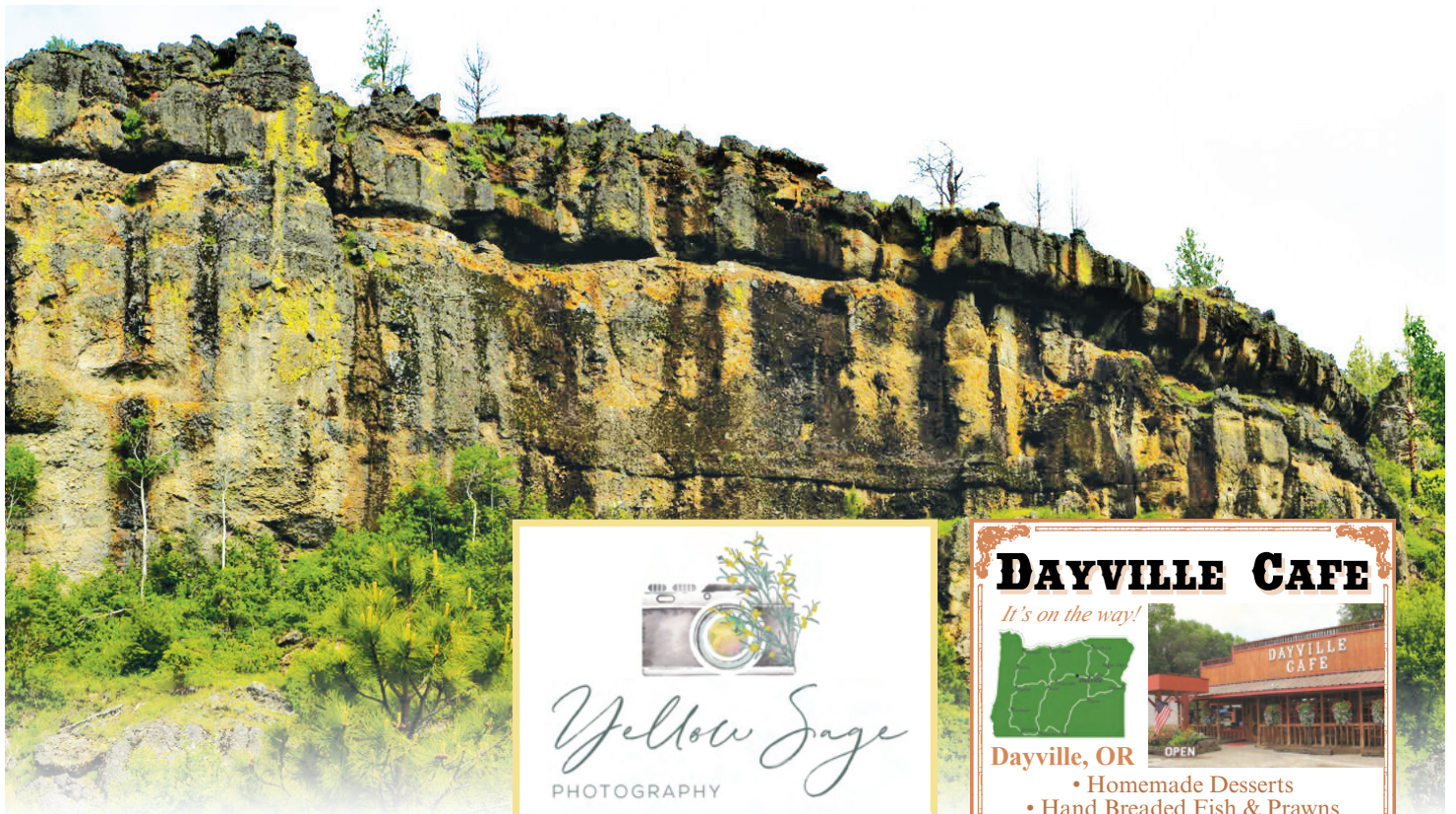
"The Best Antiques Are Old Friends"

The Dark Horse Rentals LLC
Antiques and Gifts



80 Vendors
600 S. Canyon Blvd.,
John Day, OR
541-620-5808






Yellow Sage
PHOTOGRAPHY

•Family •Newborn •Maternity
Wedding •Senior •Lifestyle •Sports

Meghan 541.410.8290 Holly 541.815.4295

DAYVILLE CAFE

It's on the way!




Dayville, OR

- Homemade Desserts
- Hand Breded Fish & Prawns
- Fresh Painted Hills Beef
- Hard Ice Cream Milkshakes

212 W Franklin Avenue • 541-987-2122
7am-3pm Tuesday-Sunday

EAGLE CAP EXCURSION TRAIN



Beside the Grande Ronde and Wallowa Rivers
Schedule and tickets online.
541.437.3652 Elgin, Oregon

eaglecaptrainrides.com

Beautiful Bouquets
Gift Baskets
Gourmet Chocolates

A Flower Shop N More

139 S Canyon Blvd • John Day
541-575-2112

a unique boutique

featuring local artisans from Grant County



133 W. Main, John Day, OR
(541) 620-2638

etc facebook: etc.auniqueboutique
email: etc.handmade@yahoo.com

Burnt River MARKET & MOTEL

Welcome Travelers!

Cafe with full menu
Breakfast, Lunch & Dinner
Served Daily!
Groceries • Snacks •
Non-ethanol fuel & more

304 Main St., Unity • 541-446-3660
Mon - Sat 7am -7pm • Sun 8am -6pm



SHARON'S INSURANCE SERVICES

46470 BLUEBIRD RD,
JOHN DAY OREGON 97845

WE HAVE YOU COVERED
SHARON R LANG - OWNER/AGENT
COMMERCIAL/SURETY/PERSONAL HOME
& AUTO/AND RECREATIONAL TOYS
INSUREWSHARON@AOL.COM
PHONE 541-575-0056 FAX 541-628-7153
CELL 360-921-1975
LICENSED IN OR, WA, CA, ID & AZ
LICENSE#2703664

Come Play with us!



GRANT COUNTY Snowballers

- John Day Country
- 500 Miles of Groomed Trails!

grantcountysnowballers.com

Contact Tim Holly: 541-620-0408 or
Garrett Carniglia: 541-792-1014 or
Tim Nodine: 541-792-0677



742 W Main St. John Day, OR



Catering Services Available
541-575-0151



Deli Foods
Snacks
Groceries
Cold Drinks
Hot Coffee
Diesel/Gas
RV Drive-Thru
Clean Restrooms
Always Friendly Smiles

Mini Market

Food & Fuel

Hwy. 26 - **MT. VERNON**
541-932-4223

Hunting

With five wildlife units and five more in bordering counties, Grant County is considered a hotspot for hunting. Visitors and locals alike also find the area a great place to unwind and get back in touch with nature. There are plenty of campgrounds in the area — the Malheur National Forest has 21 of them — and there are two major wilderness areas, Strawberry Mountain and Monument Rock, within easy reach of John Day and surrounding communities.



PHOTO BY ROBERT G. BROWN

Prairie City

Prairie City is 13 miles east of John Day along the John Day River. It is near Beulah, Northside, Malheur, Desolation and East Murderers Creek units.

Dayville

Dayville is located on Highway 26 about 32 miles west of John Day. The Northside, Murderers Creek and Ochoco hunting units intersect at Dayville, and the area is popular throughout the state for deer, sheep and elk hunting, as well as upland game birds.

Mt. Vernon

Mt. Vernon is 8 miles west of John Day on Highway 26. The area has premier mule deer and Rocky Mountain elk hunting, as well as terrific trout fishing in the river, lakes and ponds.

Monument

Monument is located on the North Fork John Day River, approximately 120 miles southwest of Pendleton and 60 miles northwest of John Day. The area is known for its fishing, hunting and whitewater rafting.

Seneca

Seneca is 26 miles south of John Day. It is a popular jump-off for the Murderers Creek, Malheur and Silvies units. The area is great for pronghorn, Rocky Mountain elk and mule deer.

Long Creek

Long Creek is about 45 miles north of John Day. This area is known for trophy mule deer and whitetail deer along with Rocky Mountain elk.

For more information, stop by the Grant County Chamber of Commerce, 301 W. Main St. in John Day, call 800-769-5664 or 541-575-0547, or visit gcoregonlive.com.

Species to hunt in Grant County and border units

Units bordering Grant County include Sumpter, Heppner, Silvies and Fossil

Northside Unit

Species hunted: Deer, elk, pronghorn, cougar, bear, mountain quail, valley quail, forest grouse, turkey

Murderers Creek Unit

Species hunted: Deer, elk, bighorn sheep, valley quail, forest grouse, turkey, gray partridge, ducks, geese

East Murderers Creek Unit

(Strawberry Mountain Wilderness Area)
Species hunted: Rocky Mountain goat

Beulah Unit

Species hunted: Deer, elk, bear, cougar, grouse

Desolation Unit

Species hunted: Deer, elk, cougar, bear, grouse

Malheur Unit

Species hunted: Deer, elk, pronghorn, cougar, bear, grouse

For hunting regulations, forecasts, maps, tag applications and other resources, visit: myodfw.com



Grant Weed Control



***Something Growing and It Don't Look Good,
Who Ya Gonna Call?***

***Grant Weed Control for a comprehensive
consultation including:***

- *Plant Identification*
- *Herbicide Recommendations*
- *Treatment Options*
- *Bio-control Options*
- *Vegetative Management Planning*

Grant Weed Control 541-575-1554

Grant Soil and Water Conservation District

***Assisting Landowners with their Natural Resource
Needs Since 1956!***

The District Provides Services Related to:

- Irrigation/Civil Engineering
- Mapping Services
- Grant Writing
- Forestry and Range Management Consulting
- Contracting/Project Management
- Geographic Information Systems
- Conservation Reserve Enhancement Program Enrollment Assistance



Kenneth H. Delano Agricultural Service Center
721 South Canyon Boulevard, John Day, Oregon 97845
Phone: (541) 575-0135 Website: www.granswcd.net






RESIDENTIAL & COMMERCIAL

- New Construction
- Remodeling
- Additions
- Siding & Windows
- Roofing
- Sun/Patio Rooms
- Garages & Sheds
- Porches & Decks
- Basements
- Cabinets
- Attic Conversions
- Doors
- & Much More

MILLS BUILDING SUPPLY

751 W. Main, John Day • 541.575.1021

5172748-1

Patriot Plumbing **245 N. Canyon City Blvd. Canyon City**
541-575-2144
 Open Monday-Friday 8PM - 4:30PM
 After Hours by Appointment



**Wilson's
Welding &
Fabrication**
Lower Yard Rd.
John Day 97845
541-620-1298

PROUD TO POWER *Grant County*

EXPLORE BEAUTIFUL EASTERN OREGON

SAFETY FIRST

When exploring, always be aware of your surroundings, have a plan, & prepare for the terrain.



HIKING



FISHING



HISTORY

Eastern Oregon is home to outdoor recreation. Enjoy the majestic mountains, sparkling lakes, rivers, and trails crisscrossing thousands of acres of public land.



**Oregon Trail
Electric Cooperative**

Your Touchstone Energy® Cooperative



www.otec.coop

Grant County Census Data:

Population

Population estimate
(July 2021): 7,226

Under 5: 4.6%

Under 18: 18.1%

Over 64: 31.4%

Female: 49.4%

Veterans: 747

Housing

Housing units
(July 2019): 4,138

Owner-occupied housing unit
rate: 76.5%

Median value of owner-
occupied housing units:
\$160,100

Median selected monthly owner
costs with mortgage: \$1,082

Median selected monthly owner
costs without mortgage: \$442

Median gross rent: \$717

Living Arrangements

Households (2017-2021): 3,274

Persons per household: 2.16

Living in same house one year
ago: 87.4%

Education

High school graduate or higher
for people over 24 (2017-2021):
90.5%

Bachelor's degree or higher for
people over 24: 17.4%

Income

Median household income
(in 2021 dollars): \$51,100

Per capita income in past
12 months: \$30,352

Businesses

Total employer establishments
(2020): 215

All firms (2019): 722

Geography

Land in square miles: 4,527.79

Population per square mile: 1.6

Mean travel time to work: 17.6
minutes

COMMUNITIES

Facts & Contacts

EMERGENCY

Dial 911

Grant County Emergency Communication Agency (dispatch)

541-575-0195, 316 S. Canyon Blvd., John Day

Grant County Sheriff's Office

541-575-1131, 205 S. Humbolt St., Canyon City

Grant County Emergency Management

541-620-1074, 323 S. Humbolt St.,
Canyon City

Grant County Health Department

541-575-0429, 528 E. Main St., Ste. E,
John Day

Blue Mountain Hospital

541-575-1311, 170 Ford Road, John Day

GOVERNMENT

Grant County

541-575-0059
201 S. Humbolt St., Canyon City

Canyon City

541-575-0509
123 S. Washington St., Canyon City

Dayville

541-987-2188, 3 Park Lane, Dayville

Granite

541-755-5100, 1378 Main St., Granite

John Day

541-575-0028, 450 E. Main St., John Day

Long Creek

541-421-3601, 250 Hardisty St., Long Creek

Monument

541-934-2025, 291 Main St., Monument

Mt. Vernon

541-932-4688, 290 W. Main St., Mt. Vernon

Prairie City

541-820-3605, 133 S. Bridge St., Prairie City

Seneca

541-542-2161, 106 A Ave., Seneca

U.S. Forest Service

541-575-3000
431 Patterson Bridge Road, John Day

Oregon Department of Forestry

541-575-1139
415 Patterson Bridge Road, John Day

BUSINESS

Grant County Chamber of Commerce

541-575-0547, 301 W. Main St., John Day

Grant County Economic Development

541-575-1555
530 E. Main St., Ste. 4, John Day

GRANT COUNTY INDUSTRIAL PARK

Features 1-acre parcels as well as some larger lots available for purchase or lease. The park is an enterprise zone, which offers the option of temporary property tax exemption for eligible businesses. The park is zoned for commercial/industrial development. Single-phase 120/240V and three-phase 480V is available to all commercial/industrial park sites. The site is adjacent to the Grant County Regional Airport.

AIRPORT

Grant County Regional Airport

541-575-1151, 72000 Airport Road, John Day

The Grant County Regional Airport terminal features a third-story observation deck, conference rooms with the latest technology and kitchen facilities. The airport offers Jet A and Avgas refueling, private hangars, two courtesy cars and a pilot lounge. A GPS instrument approach system and automated weather observation system (AWOS III) offer pilots safe and convenient access.

UTILITIES

Oregon Trail Electric Cooperative

541-575-0161
400 Patterson Bridge Road, John Day

Columbia Power Cooperative

541-934-2311, 311 Wilson St., Monument

Oregon Telephone Corporation

541-932-4411, 1 Telephone Drive, Mt. Vernon

Rally Networks

844-725-5963, 155 W. Main St., John Day

CenturyLink 888-723-8010

Viasat 888-593-1030

HughesNet 844-961-2404

DirectTV 833-390-2202

Dish Network 833-750-2632

EDUCATION

Grant County Library

541-575-1992, 507 S. Canyon Blvd., John Day

Grant County Education Service District

541-575-1349, 835 S. Canyon Blvd., John Day

Dayville School District 16J

541-987-2412
285 School House Road, Dayville

Grant School District 3

541-575-1280
401 N. Canyon City Blvd., Canyon City

Long Creek School District 17

541-421-3896, 375 E. Main St., Long Creek

Monument School District 8

541-934-2646, 127 North St., Monument

Prairie City School District 4

541-820-3314, 740 Overholt St., Prairie City

John Day

Elevation: 3,087 • Population: 1,667

With the only stoplight in Grant County, John Day is the “big city.” Centrally located at the intersection of highways 26 and 395, the town has facilities serving the surrounding areas, including a hospital, county fairgrounds, airport, industrial park, Chamber of Commerce and library, as well as a grocery store, pharmacy, restaurants, pubs and other businesses. John Day is home to the Kam Wah Chung State Heritage Site, a carefully preserved relic of the area’s 19th century mining boom. Built in 1865, the building housed a Chinese apothecary and general store and now serves as a museum. The Oregon Parks and Recreation Department has purchased the adjacent city park property and is planning a new interpretive center on the site. A few blocks away on Main Street, you’ll find the Ranch and Rodeo Museum, which celebrates the cowboy way of life in Grant County. The Seventh Street Sports Complex on the north side of town offers a variety of recreational opportunities. Just west of town, the John Day Golf Course invites guests to play nine holes and enjoy the stunning views overlooking the course from a large banquet room in the clubhouse. The new Davis Creek Park offers hiking trails and views, and a network of pedestrian and bicycle paths is taking shape along the John Day River in the heart of town.

Explore John Day

The Seventh Street Sports Complex features baseball and softball fields, tennis and basketball courts, a skate park, a fishing pond, picnic areas, a playground and a paved mile-long trail that circles the property. It features a newly constructed 6,800-square-foot kiddie park with two playground areas for different ages, as well as an 87-by-37-foot splash pad with a variety of water features. The John Day Bike Park has single-track trails winding back and forth across the hill overlooking the complex, as well as slope-style jumps and a skills course with its own pump track. To visit the complex, take Bridge Street north from Highway 26 (Main Street) and turn right on Seventh Street.

Dayville

Elevation: 2,369 • Population: 137

On the west end of the John Day Valley, Dayville is rich in “Old West” atmosphere and small town charm. The town has a variety of amenities, including food and fuel, and the recently renovated Dayville Community Hall provides a wonderful venue for indoor events. The city park along the John Day River features a large grassy area, horseshoe pits, tennis courts, picnic areas, a playground and a well-kept restroom. Moreover, the area is surrounded by stunning scenery. The Mascall Overlook, about 4.5 miles west of Dayville, offers 360-degree views of the colorful hillsides and is wheelchair-accessible. Farther west is Picture Gorge, named for the Native American pictographs that adorn the steep canyon walls. Beyond is the John Day Fossil Beds National Monument. Dayville is situated at the intersection of the Northside, West Murderers Creek and Ochoco hunting units, and the area is rich in hunting, hiking, camping and fishing options.

Explore Dayville

South Fork Road south of Dayville follows the South Fork John Day River to the South Fork Falls. The road turns to gravel, but the well-graded route offers a variety of scenic vistas of the river and rock formations in the canyon. Past the Black Canyon Trailhead, which leads into the Black Canyon Wilderness, South Fork Road meets Forest Road 24 near a bridge across the river. The falls are upstream from the bridge but may not be visible from the road. If you’re in the area in October, you won’t want to miss the Dayville Scarecrow Contest.



John Day
at night

COMMUNITIES

Mt. Vernon

Elevation: 2,695 • Population: 549

For a small community, Mt. Vernon is home to a variety of amenities. Phil Boyd Park features basketball and tennis courts, restrooms and a covered picnic area, and the city has installed new playground equipment. A spacious community center and the Mt. Vernon Grange host annual events and functions, and Clyde Holliday State Park is only a short drive away. Local government recently moved into a new City Hall and plans to convert the old building into a museum. Mt. Vernon was named after a resident's treasured racehorse, said to have lost only one race in his life, and a small stone fort used to protect him from being stolen still stands about 2 miles east of town.

Explore Mt. Vernon

Just a mile east of Mt. Vernon, Clyde Holliday State Park features a peaceful walking trail along the scenic John Day River. The free day-use area is a popular wayside for motorists, with spacious grassy areas, picnic tables and benches near the river. For a fee, the campground offers overnight accommodations for tents and trailers, and travelers can even stay in one of the two teepees at the park, pending availability. An ADA-accessible pond stocked with trout at the west end of the site provides further recreational opportunities.

Canyon City

Elevation: 3,173 • Population: 676

When gold was discovered here in 1862, Canyon City quickly sprang up as a booming mining town with about 10,000 residents – at the time, it had more inhabitants than Portland, Oregon's current largest city. After the rush, the population dwindled, but the community remembers its origins in an annual '62 Days Celebration in June. Canyon City is the county seat, with government offices and a variety of businesses. The Grant County Historical Museum houses artifacts, documents and photographs that bring the county's history to life. In the heart of town, Sproul Park features a playground, picnic area, restrooms and a covered stage that is the site of summer concerts.

Explore Canyon City

Canyon Mountain Trail is a hidden gem that provides incredible views of the John Day Valley. The 28-mile trail takes hikers in and out of the burn area from a 2015 wildfire, crossing several creeks and streams fed by snowmelt. To reach the trailhead, travel east 2 miles on County Road 52 from Canyon City and take a right on County Road 77 for about a quarter-mile. Then take another right on Forest Road 7700333 to the trailhead.

View from Canyon City



551 W. Main, John Day • 541.575.1346

Wherever you travel in
GRANT COUNTY,
Les Schwab is there!

Tires • Wheels • Brakes • Batteries • Alignment • Suspension • Sudden Service

Places to Stay

Victorian Lane B&B JOHN DAY, OREGON



Read our Online Reviews

Experience Country Elegance in our
Top Rated **Bed and Breakfast**
541-286-5548 | victorianlanebnb.com

Fly or Drive In to Lands Inn

Queen beds with full bath and shower. Five solar-powered
cabins. Off-grid camping. Five miles off Highway 19.



541-934-2333 • landsinn.net



LAKE CREEK CAMP

WEDDINGS, REUNIONS, RETREAT

Cabin rentals, tent and dry camp
A la cart meals



Open Daily
for Showers
and ice

Located
in the
Malheur
National
Forest
Logan
Valley in
Eastern
Oregon

lakecreekcamp.org lakecreekcamp@yahoo.com

50,000 Lake Creek Road Seneca, OR

S172202-1



Fish House Inn & RV Park

The eastern gateway to the
John Day Fossil beds on Hwy 26.
110 E Franklin Ave., Dayville OR 97825

541-987-2124

www.fishhouseinn.com

Seneca Timbers Inn & RV Park



Timbers Inn & RV is located in the heart of four of the
best hunting units: North Malheur, East Murderer's
Creek, West Murderer's Creek, and Silvies.
The Inn offers three rustic cabins for your stay or 12
full service RV hook-ups.

To make reservations **Call 541-620-2551**
306 Barnes Ave. Seneca, Oregon

S172199-1

Dixie Creek Bungalows

Vacation Rentals

Not so Tiny - Tiny Homes

Downtown Prairie City, OR

Each sleeps 4, Nightly bookings,

Extended Stay, Pet friendly

Available on AIRBNB.COM

or call 541-604-8740

S171862-1

Places to Stay



Paul & Leslie Barnett, Lineah Barnett
171 W. Main, Long Creek, OR ~ N. HWY 395
541.421.9212 • longcreeklodge@aol.com

Located on HWY 395 South, in the foothills of the Southern Blue Mountains | Bicycle friendly ~ Old West Scenic Bikeway | Seven rooms with Satellite TV & WiFi | Light Continental Breakfast



Daily & Weekly Rates

Budget 8 Motel

711 W Main St, John Day, OR 97845
(541) 575-2155



John Day Motel

2-Star Motel
250 E Main St, John Day, OR 97845
(541) 575-9000

WELCOME TO PRAIRIE CITY

The Gateway to the Strawberry Mountains

MOUNTAIN VIEW MINI-MART PRAIRIE CITY YOUR ONE STOP SHOP



Full Service Deli & Daily Specials
Sunday Family Dinner Specials
M-S 5am-8pm
Sunday 7am-7pm
**211 SW Front St.,
Prairie City
541-820-4477**



Tri-Tip Dips or Sandwiches, Burgers, Sandwiches & Wraps, Salads and Toasted Subs

Winter hrs Tues-Sat 11am-8pm
Summer hrs T-W-Th 11am-8pm
Fri & Sat 11am-9:30pm
226 Front St. 541-820-4337

WESTERN CLOTHING

**Boots • Hats • Gifts
for the whole family**

Wrangler



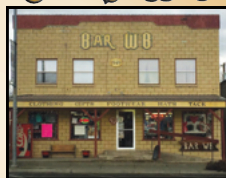
CINCH
JEANS & SHIRTS

carhartt

UTBACK
TRADING COMPANY LTD.

MONTANA
SILVERSADDLES

BAR UB



**Front St.,
Prairie City
541-820-3675**

Squeezeie V's

DBA
Chuck's
Little
Diner

**OPEN FOR
BREAKFAST
AND LUNCH**



142 W FRONT ST., PRAIRIE CITY • 541-820-4353

COMMUNITIES

Prairie City

Elevation: 3,535 • Population: 842

With spectacular views of Strawberry Mountain, Prairie City provides easy access to year-round outdoor recreation. From the Blue Mountains to the Strawberry Mountain Wilderness, the area is surrounded by opportunities for fishing, hiking, biking, hunting, skiing, snowmobiling and camping. Businesses provide a small town “Main Street” atmosphere downtown, and the Prairie City Community Center provides a place to gather. The town has two parks: The city park in the center of town features a playground and picnic area near City Hall, and Depot Park at Bridge and Main streets is home to Depot RV Park and the DeWitt Museum, which houses a collection of local railroad memorabilia as well as other items in the historic Sumpter Valley Railway Depot.

Explore Prairie City

Strawberry Lake is a pristine mountain oasis in the Strawberry Mountain Wilderness. Strawberry Campground is as far as vehicles can travel, and the rest of the trek is on foot. The moderately difficult trail travels about a mile and a quarter from the campground uphill to the lake. Strawberry Falls is about another mile up the trail, which is connected to a trail system that traverses the wilderness. The campground is about 11 miles south of Prairie City on County Road 60.



Wagon in Prairie City

PHOTO BY DAVE GUNDERSON

Sometimes the best solution is to
REST, RELAX & RECHARGE....

HOTEL PRAIRIE

HOTEL



HOTEL PRAIRIE

112 Front St. Prairie City, OR

541-820-4800

www.hotelprairie.com

VISIT GRANT COUNTY EVERY DAY

with a digital subscription to
the Blue Mountain Eagle

Once your visit to Grant County is complete, you can still keep in touch with the latest news, community events and tourism-related features with a digital subscription to the Blue Mountain Eagle



Your digital subscription includes unlimited access to **MyEagleNews.com** from your computer, smartphone or tablet.

You'll get around-the-clock access to the Blue Mountain Eagle and more! It's news you can use to help plan your next trip to the county or to stay informed on what's happening in the area.

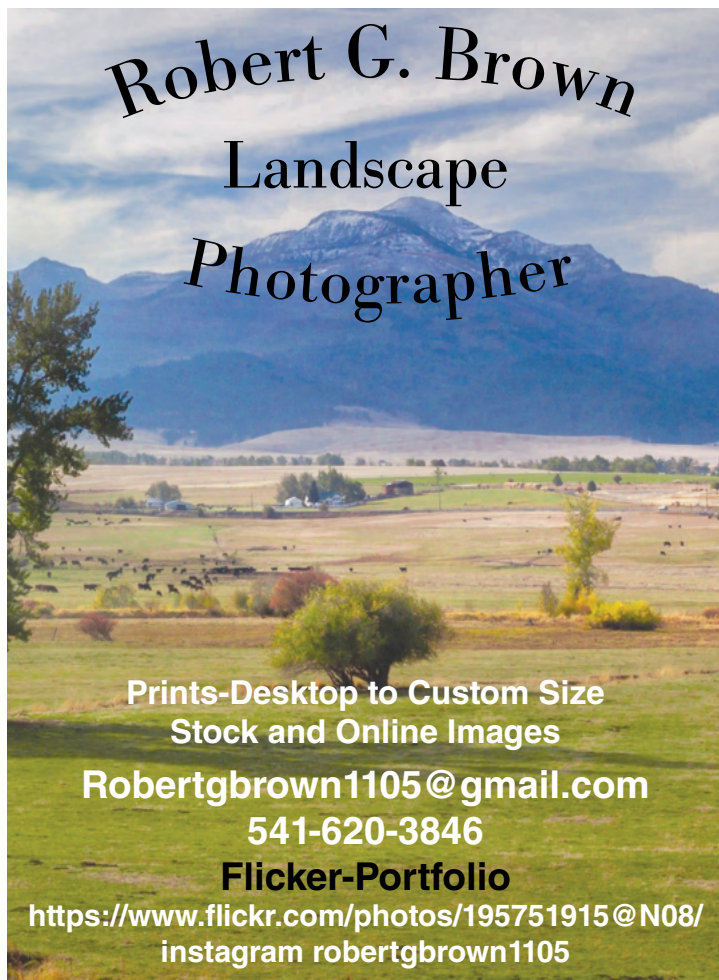
The Blue Mountain
EAGLE



195 N. Canyon Blvd.
John Day, Oregon

MyEagleNews.com
541-575-0710

Robert G. Brown Landscape Photographer



Prints-Desktop to Custom Size
Stock and Online Images

Robertbrown1105@gmail.com

541-620-3846

Flicker-Portfolio

<https://www.flickr.com/photos/195751915@N08/>
[instagram robertgbrown1105](https://www.instagram.com/robertgbrown1105)

We Keep You on the ROAD

FRONTIER EQUIPMENT REPAIR

Full Auto Repairs • 541-932-4777

24-HR TOWING



www.frontierrepairandrental.com

* Oregon State Police & Motor Club approved



Complete Auto Body & Paint
Windshield Repair & Replacement

Owner
Jeb Bowling

700 S. Canyon Blvd., John Day
541-575-1786



NAPA AUTO & TRUCK PARTS
"NAPA Know How"

**Great Parts, Great
People, Great Prices.**

**JOHN DAY
AUTO PARTS**

721 W. Main St. • John Day
541-575-1850
Open Mon-Fri 7am-6pm
Sat 8am-5pm
Closed Sunday

Proudly Serving
Grant County
since 1966

- Your source for automotive, truck and tractor parts & accessories

- Full automotive machine shop

- Outside salesmen

- Full line Martin Senour paints

- ASE-Certified countermen

- Oxygen & acetylene

- Steel sales

COMMUNITIES

Seneca

Elevation: 4,666 • Population: 167

At an elevation of 4,666 feet, Seneca set the record for the coldest temperature ever recorded in Oregon — negative 54 degrees on Feb. 10, 1933 — earning the nickname “Oregon’s Icebox.” Homesteaders began moving into Bear Valley in the mountains of southern Grant County in the 1880s, but the arrival of the Edward Hines Lumber Co. established Seneca as a thriving logging town in the 1920s. Close to 200 people still call Seneca home, with local businesses offering food and fuel, and a new CyberMill with high-speed internet access. The community park, which features a baseball field, horseshoe pits, playground, picnic area and restrooms, is the site of the annual Seneca Oyster Feed in May, a tradition over 20 years strong that draws visitors from throughout Oregon and other states as well. With beautiful scenery and prime hunting grounds, Bear Valley is surrounded by abundant outdoor recreational opportunities in the Malheur National Forest. About 10 miles north of town is the Starr Ridge winter sports area, and about 5 miles south is the Retreat & Links at Silvies Valley Ranch.

Explore Seneca

East of Seneca on Forest Road 16, the Malheur National Forest provides hiking, fishing, hunting, camping and sightseeing opportunities.

Areas along Forest Roads 1619 and 15 are obsidian sources. Farther east in Logan Valley on the south side of the Strawberry Mountain Wilderness, vivid wildflowers paint the landscape in springtime, and wildlife is abundant year-round. To make a scenic loop around the wilderness, follow Forest Road 16 east from Seneca and turn north on County Road 62 to Prairie City, then take Highway 26 west to John Day.



PHOTO BY
ROBERT G. BROWN

Long Creek

Elevation: 3,754 • Population: 175

Nestled in a high valley of the Blue Mountains in northern Grant County, Long Creek has a small-town aesthetic but enough amenities to make travelers feel comfortable. Businesses offer food, fuel and other necessities, and the area is near a variety of recreational opportunities, including camping, hiking, biking and water activities. The Long Creek Historical Society is an active group dedicated to preserving and promoting the history of the area, including the neighboring communities of Fox, Hamilton and Monument. The society re-erected Fort Townsend, the Army post built in Long Creek in 1878, within the city and is now working to build a museum and interpretive center there to house historical photographs and artifacts that have been collected. A “Fort Townsend” sign on West Main Street leads to the future site. The fort was originally erected east of town during the 1878 Bannock and Paiute Indian War, and William “Billy” Townsend, a Civil War veteran, defended the installation from the approaching tribes. For more information about the historical society, call 541-421-3621 or visit cityoflongcreek.com/history.

Explore Long Creek

Social Security Pond, about 4 miles west of town, is a tranquil spot for fishing or picnicking. The city park at Main and Allen streets features a basketball court, horseshoe pits, picnic area and playground.



551 W. Main, John Day • 541.575.1346

Wherever you travel in
GRANT COUNTY,
Les Schwab is there!

Tires • Wheels • Brakes • Batteries • Alignment • Suspension • Sudden Service

Familiar, Friendly Service
YOU CAN TRUST



We're here when you need us!

541-575-0629 • www.lenspharmacy.com

120 E. Main, John Day



GRANT COUNTY FAIRGROUNDS RV PARK

This is a pet-friendly RV Park with a great river walk trail that was updated in 2011 to make it a great scenic walk for family, friends and pets. Close to downtown John Day.

SERVICES

- Full hookups with 20/30/50 amps
- Pull-through sites
- Restroom and shower facility
- Free Wifi
- Pet friendly
- Easy walk to restaurants, parks, banks, post office, and bars.
- Scenic trail walk
- River Access



RESTROOM & SHOWER FACILITY

RV PARK RESERVATIONS

Please call 541-575-1900

OFFICE HOURS

Monday-Thursday: 8am to 4pm

Friday: 8am to Noon

FULL HOOK UP - \$35/Night (includes Tax)

(RV's must be less than 15 Years old)

TENT CAMPING - Orchard area \$10/night

(No tents in RV Park)

SHOWERS - \$5

PRICES MAY CHANGE WITHOUT NOTICE

MOSSY OAK PROPERTIES
Copper Creek Land Company
America's Land Specialist

If you are interested in selling and would like a free evaluation call or email us.

Julie Mansfield Smith | Cell: 541-519-6891
Principal Broker/Owner | Office: 541-934-2946

cuppercreeklandco@gmail.com
www.cuppercreeklandcompany.com

Thomas Orchards

Juiciest, Most Flavorable Fruit

Kimberly, Oregon

541-934-2870

"Fruit in Season"

Cherries • Apricots • Peaches • Nectarines • Plums • Pears • Apples

ThomasOrchards@hotmail.com • Join us on Facebook

Dale Daby

Snack Foods • Fresh Donuts • FREE Popcorn

We're Your Kind Of Store!

Come Visit Our Friendly People At...

HUFFMAN'S FAMILY MARKET

Prairie City • 541-820-3588

Fresh Produce • Complete Meat Department • Cold Beverages

COMMUNITIES

Kimberly

Elevation: 1,828 • Population: n/a

At the western edge of Grant County, far from the frigid peaks of the Blue Mountains, the town of Kimberly was established at the confluence of the John Day River and its North Fork. Kimberly's low elevation provides a temperate Mediterranean climate with rich growing opportunities. A commercial orchard was established in the 1930s, and people today can still pick their own fruit at Thomas Orchards. Local businesses offer groceries and fuel, and the area features an abundance of scenery and recreational opportunities with river access.

Explore Kimberly

The Sheep Rock Unit of the John Day Fossil Beds National Monument to the south provides beautiful views of geological formations, a variety of trails and historical artifacts. Bull Prairie Lake is about 24 miles from Kimberly, and a bit farther north is the Morrow & Grant County OHV Park, with more than 200 miles of trails for jeeps, quads, side-by-sides and dirt bikes.

Monument

Elevation: 2,000 • Population: 116

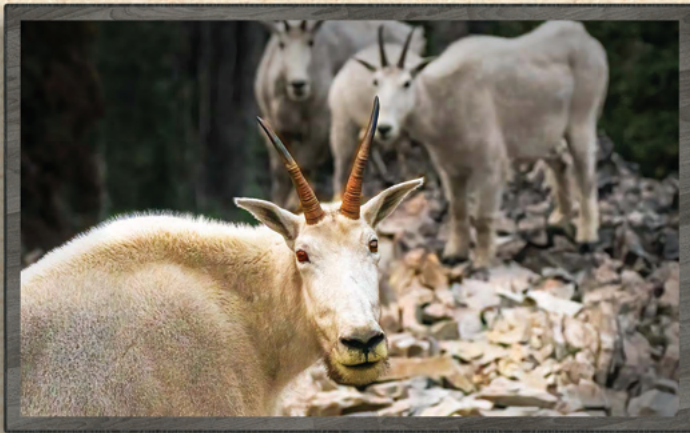
Tucked away in the northwest corner of Grant County, Monument is surrounded by beautiful scenery. Established near the North Fork of the John Day River, the area is rich in fertile ground and a variety of activities, including fishing, hunting, hiking, rafting and photography. Red, rocky outcroppings and Sunken Mountain are southeast of town, and Thomas Cavender Reservoir just west of town and Monument River Park to the south provide opportunities for water-based recreation. Meals are served weekly at the senior center, which also hosts community events, and businesses offer food and fuel. A large, shaded park in town features a playground, basketball and tennis courts, horseshoe pits and covered picnic areas. The town is known for its annual Fourth of July Fun Festival, including a small parade, activities throughout the day and a large fireworks display over the John Day River at dusk.

Explore Monument

When the water levels are right in late spring and early summer, after the initial spring flooding has subsided, the North Fork John Day River provides a scenic rafting and fishing experience. Designated as a National Wild and Scenic River, the North Fork features an abundance of wildlife, and interesting rock formations jut out along the river. Rafters can put in near Dale and take out at Monument River Park for a several-day trip or take a shorter float from Monument to Kimberly or Spray. And check out the Buckaroo Festival & Harvest Auction in September.

Ranch in Kimberly





Simply Nature

fine art photography
from backcountry oregon

by kyle cline



john day studio/gallery visits by appointment 541.575.1011
SimplyNaturePhotos.com

COMMUNITIES

Dale

Elevation: 2,917 • Population: n/a

In northern Grant County, the small community of Dale lies just south of the 45th parallel on Highway 395 near the border with Umatilla County. A store provides fuel and groceries as well as shuttles for people floating the North Fork of the John Day River. Nearby is the Bridge Creek Wildlife Area, where mountain bluebirds, larks, hawks and bald eagles can be seen and where 1,000 Rocky Mountain elk migrate in the winter.

Explore Dale

South of Dale, a mineral hot springs is about all that remains in the ghost town of Ritter. Named after a minister who gave land for the post office, Ritter was once the site of a popular resort, where weary travelers could unwind in the pool or mineral baths surrounded by the scenic beauty of the Middle Fork of the John Day River. Eventually, however, as the town's population shrank, the resort closed its doors. To find Ritter, head west from Highway 395 on Ritter Road, which turns off near milepost 77B about 13 miles south of Dale.

Granite

Elevation: 4,695 • Population: 32

In the northeastern corner of Grant County, Granite provides a break from civilization in the great outdoors. Travelers are more likely to encounter the resident wildlife than the human inhabitants, though many nonresidents visit for hunting, ATV riding, prospecting and snowmobiling in the Blue Mountains. The Historic Fremont Powerhouse was built in 1908 and piped water from Olive Lake to generate electric power. The plant shut down in 1967 and was donated to the Forest Service. Visitors today can still view the historic structure and can even stay in rental cabins on the grounds.

Explore Granite

Nearby, visitors can trek into the North Fork John Day Wilderness. Olive Lake is a peaceful retreat a short drive west that offers opportunities for fishing, boating, swimming, hiking and camping.



North Fork of the
John Day River
near Dale

ROCKY MTN DISPENSARY

CLIMB HIGHER.



OPEN 10 - 8 FRIDAY - SATURDAY
10 - 6 SUNDAYS

743 WEST MAIN STREET
JOHN DAY, OR



WARNING: For use by adults 21 and older. Keep out of reach of children. It is illegal to drive a motor vehicle while under the influence of marijuana.

Where the Frontier Meets Innovation

GRANT COUNTY, OR



Info@GrantCountyOregon.net



Did You Know?



Quality Healthcare Close to Home

WE PROVIDE CARE TO MEET YOUR EVERY NEED

- Emergency Services
- Home Health & Hospice
- Primary Care & Geriatric Care
- Birthing Center
- Wound Care Clinic
- Foot Clinic
- Care Center in Prairie City

WE ALSO PROVIDE

- Respiratory Therapy
- Infusion Therapy
- Transfusions
- Physical Therapy
- Occupational Therapy
- Speech Therapy
- Dietary/ Nutrition Services
- Dermatology
- Pain Management

YOU CAN GET YOUR TESTS DONE HERE AT BLUE MOUNTAIN HOSPITAL

- X-Rays
- Labs
- CT Scan
- MRI
- Ultrasounds
- Bone Density Scans
- Diagnostic Tests
- Stress Tests
- Echocardiograms
- 3D Mammography

WE HAVE VISITING SPECIALISTS HERE ON A REGULAR BASIS

- Cardiology
- Ophthalmology
- Orthopedic
- Neurology

WE PERFORM MANY SURGICAL PROCEDURES, INCLUDING

- Cataract Surgery
- Hernia Surgery
- Gallbladder Surgery
- Colonoscopy
- Upper Endoscopy
- Appendectomy
- Bowel Resection
- Breast Biopsy
- and More!

WE ARE YOUR MEDICAL HOME AWAY FROM HOME

- Recover close to home after having surgery or treatment at another medical center utilizing our Transitional Care.

Same Day Appointments available at Strawberry Wilderness Community Clinic Monday - Friday for sudden non emergent symptoms. Call for an appointment: 541-575-0404

Extended Hours for Appointments and Services

170 Ford Rd., John Day

541-575-1311

www.bluemountainhospital.org

